



MEDICA DEPOT

**GLOWING POWDER -
CHEMICAL PEEL ADDITIVES
Product Specifications**

medi+derma

CATALOGUE



PROFESSIONAL USE





WHAT IS A PEEL?

The term "peel", literally means to strip off or come off in sheets or scales. In dermo-cosmetics, peels are used to cause an accelerated skin cell turnover for different purposes: cleansing, nourishing, moisturizing, astringency, reducing ageing effects, anti-seborrheic action, depigmenting, etc.

Nowadays, chemical peels are regarded as a better and less invasive treatment option which helps keep a healthy, beautiful skin, and can also contribute to inhibit signs of ageing. Their use is not limited to single treatments, since they are often used as complements or basic steps in other dermo-cosmetic procedures, such as microdermabrasion, mesotherapy, skin fillers, etc.

According to the depth of action of the substance in use, the peel can be:

- Superficial: causes the destruction of the stratum corneum and partial destruction of the epidermis.
- Medium depth: causes total epidermal destruction and total or partial destruction of the papillary dermis.
- Deep: induces the total destruction of the epidermis and the dermis reaching the mid reticular dermis.

The effectiveness of a peel depends on multiple factors, such as the expertise in the substance used, the characteristics of the skin (phototype, thickness, ethnic inheritance, hypersensitivity), the formulation of each substance (concentration, pH), contact time, etc.

Skin phototype

Selecting a peel depends greatly on the patient's skin type. FITZPATRICK SKIN-TYPE CHART.

PHOTOTYPE	0	I	II	III	IV	V	VI
HAIR COLOUR	White	Red	Blond	Blond-brown	Chestnut	Chestnut	Black
SKIN COLOUR	White	Pale	Light	Light	Dark	Dark	Black
SUNBURNS	Always	Always	Frequent	Frequent	Rarely	Exceptionally	Exceptionally
TANNING	No tan	No tan	Light tan	Mild tan	Dark tan	Dark tan	Dark tan

Lower phototype skin has better tolerance to chemical agents, while higher phototype skin is more easily irritated.

Relevant aspects of a chemical peel

1. Concentration of active ingredients

Higher concentration provides greater strength, increased efficacy and irritation capacity.

2. pH level of the peel

The ideal peel must be formulated at a pH near the pKa (pH at which the levels of free acid and salt are equivalent) of the acid employed.

Therefore, as the pH increases, the degree of exfoliation is reduced.

- If $pH = pKa$ → the formulation contains 50% of free acid and 50% of salt.
- If $pH > pKa$ → the formulation contains more salt → milder.
- If $pH < pKa$ → the formulation contains more acid → stronger.

3. Texture of the peel

GEL

- The depth of the peel depends on the gel's contact time with the skin.
- Wash to neutralise.
- Slow penetration = less irritation.

SOLUTION

- The depth of the peel depends on the amount of solution and the number of coats applied.
- Let the solution dry (approx. 3 minutes after each layer application).

Massaging (gel) or applying pressure (solution) can enhance the penetration of the peel.



SESGLICOPeel

Acne • Skin Aging • Hyperpigmentation

PEELS

SESGLICOPEEL



SESGLICOPEEL CLASSIC

100 ml - pH 1.5 - 2.5

COMPOSITION

- 52.5% Glycolic acid.

INDICATION

Skin ageing.
Preparatory peel.



SESGLICOPEEL S

100 ml - pH 1.5 - 2.5

COMPOSITION

- 20% Lactic acid.
- 15% Glycolic acid.
- 10% Salicylic acid.
- 5% Citric acid.

INDICATION

Oily and/or acne prone skins (hormonal), hyperkeratotic conditions (psoriasis, seborrheic dermatitis) and acne scars.



SESGLICOPEEL K

100 ml - pH 2.0 - 3.0

COMPOSITION

- 33% Glycolic acid.
- 7% Kojic acid.
- 6% Lactic acid.
- 5% Citric acid.
- 3% Salicylic acid.

INDICATION

Hyperpigmentations in skin sensitive to hydroquinone and higher phototype: inflammatory and non-inflammatory acne, acne scars, rosacea and couperose.



SESGLICOPEEL KH

100 ml - 1.5 - 2.5

COMPOSITION

- 33% Glycolic acid.
- 10% Lactic acid.
- 9% Citric acid.
- 5% Kojic acid.
- 3% Salicylic acid.
- 2% Alpha-arbutin.

INDICATION

Hyperpigmentations in low skin phototypes and hydroquinone tolerant skin.



MELASPEEL

Modified Jessner Solutions

PEELS

MELASPEEL



MELASPEEL K

60 ml - pH 2.3 - 2.7

COMPOSITION

- 14% Lactic acid.
- 12% Citric acid.
- 5% Kojic acid.
- 2% Salicylic acid.

INDICATION

Hyperpigmentations in higher phototype skin or those sensitive to hydroquinone. Active acne. Seborrheic dermatitis. Rosacea. Couperosis.



MELASPEEL KH

60 ml - pH 2.0 - 2.4

COMPOSITION

- 10% Lactic acid.
- 10% Citric acid.
- 5% Kojic acid.
- 2% Salicylic acid.
- 2% Alpha-arbutin.

INDICATION

Hyperpigmentations in low phototypes.



MELASPEEL R

60 ml - pH 2.1 - 2.5

COMPOSITION

- 14% Lactic acid.
- 14% 4n-butylresorcinol.
- 5% Citric acid.
- 5% Kojic acid.
- 2% Salicylic acid.
- 2% Alpha-arbutin.

INDICATION

Hyperpigmentations. A more potent formulation than Melaspeel K and KH. Focal application.



MELASPEEL J

60 ml - pH 2.0 - 3.0

COMPOSITION

- 14% 4n-butylresorcinol.
- 14% Salicylic acid.
- 10% Lactic acid.
- 2% Citric acid.

INDICATION

All types of acne. Acne scars.



MELASPEEL J2

60 ml - pH 2.0 - 3.0

COMPOSITION

- 25% 4n-butylresorcinol.
- 8% Salicylic acid.
- 5% Lactic acid.
- 5% Citric acid.
- 0.2% Glycolic acid

INDICATION

Severe cystic acne. Focal applications. Lentigines, melasma and acne scars.



SALIPEEL

Acne • Acne Scars • Folliculitis • Hyperkeratotic Lesions

PEELS

SALIPEEL



SALIPEEL ALCOHOLIC SOLUTION

60 ml - pH 1.5 - 2.5

COMPOSITION

· 25% Salicylic acid.

INDICATION

All types of active acne.
Seborrheic dermatitis and psoriasis.



SALIPEEL DS

60 ml - pH <1.0

COMPOSITION

· 30% Salicylic acid.

INDICATION

Acne and hyperkeratotic conditions in sensitive and high phototype skin. It uses a new vehicle, macrogol (polyethylene glycol), which makes it suitable for all skin types, even the darkest and most sensitive ones.



SALIPEEL PLUS

60 ml - pH 1.5 - 2.5

COMPOSITION

· 25% Salicylic acid.
· 15% Azelaic acid.

INDICATION

Folliculitis, acne, and psoriasis.
Skin that is used to salicylic acid.
Body treatments.



MANDELAC

The 2nd Generation of AHAs: Mandelic Acid

PEELS

MANDELAC



MANDELAC T

60 ml - pH <1.0

COMPOSITION

- 20% Mandelic acid.
- 5% Thioglycolic acid.
- 2.5% Phytic acid.

INDICATION

Hemosiderotic pigmentations (dark circles, sclerosis of varicose veins, etc.).



MANDELAC SOLUTION

60 ml - pH 1.0 - 2.0

COMPOSITION

- 40% Mandelic acid.

INDICATION

Acned, seborrheic skin, or skin affected by folliculitis or rosacea.



MANDELAC C

60 ml - pH 0.5 - 1.5

COMPOSITION

- 30% Citric acid.
- 20% Mandelic acid.

INDICATION

Ageing skin.



MANDELAC L

60 ml - pH <1.5

COMPOSITION

- 35% Mandelic acid.
- 20% Lactic acid.

INDICATION

Uneven pigmentation and blemishes.



MANDELAC EXFOLIATING GEL

100 ml - pH 1.0 - 2.0

COMPOSITION

- 40% Mandelic acid.

INDICATION

Aged skin.
Uneven pigmentation and blemishes (liver spots, pregnancy, contraceptives).



AZELAC

AZELAC Triple Peel System

PEELS

AZELAC



AZELAC M

60 ml - pH 1.0 - 2.0

COMPOSITION

- 18% Salicylic acid.
- 15% Azelaic acid.
- 10% Mandelic acid.

INDICATION

Acne, hyperpigmentation, rosacea and photoageing.



AZELAC RU

60 ml - pH <1.0

COMPOSITION

- 20% Azelaic acid.
- 10% Mandelic acid.
- 5% Phytic acid.
- 5% 4n-butylresorcinol.
- 2% Ferulic acid.

INDICATION

Hyperpigmentation and photoageing.



AZELAC EXFOLIATING GEL

100 ml - pH 2.0 - 2.5

COMPOSITION

- 20% Azelaic acid.
- 4% Lactic acid.
- 2% Silybum marianum extract (silymarin).

INDICATION

Rosacea, acne, psoriasis, folliculitis, melasma and other types of pigmentation.

PROPERTIES of azelaic acid

Azelaic acid regulates sebum production, normalises keratinisation, inhibits reproduction of bacteria, inhibits the proliferation of reactive oxygen species and regulates pigmentation.



NOMELAN FENOL

Deep Wrinkles • Severe Pigmentation • Stretch Marks

NOMELAN FENOL



NOMELAN FENOL FD

60 ml - pH <1.0

COMPOSITION

- Phenol.
- Trichloroacetic acid.
- Kojic acid.
- Diacetyl boldine.
- Undecylenoyl phenylalanine.
- Glycolic acid.
- Salicylic acid.
- Mandelic acid.
- Phytic acid.
- Retinol.

INDICATION

Hyperpigmentation in higher phototypes (IV-VI).



NOMELAN FENOL MEDIUM

60 ml - pH <1.0

COMPOSITION

- Phenol.
- Trichloroacetic acid.
- Glycolic acid.
- Salicylic acid.
- Ascorbic acid.
- Mandelic acid.
- Phytic acid.
- Retinol.
- Ferulic acid.

INDICATION

Medium depth wrinkles and acne scars.



NOMELAN FENOL LIGHT

60 ml - pH <1.0

COMPOSITION

- Phenol.
- Trichloroacetic acid.
- Glycolic acid.
- Salicylic acid.
- Ascorbic acid.
- Mandelic acid.
- Phytic acid.
- Retinol.
- Ferulic acid.

INDICATION

Superficial wrinkles and acne. Higher phototypes.



NOMELAN FENOL FORTE

20 ml - pH <1.0

COMPOSITION

- Phenol.
- Trichloroacetic acid.
- Glycolic acid.
- Salicylic acid.
- Ascorbic acid.
- Mandelic acid.
- Phytic acid.
- Retinol.
- Ferulic acid.

INDICATION

Focal application, deep wrinkles, stretch marks, and flaccidity.



NOMELAN FENOL KH

60 ml - pH <1.0

COMPOSITION

- Phenol.
- Trichloroacetic acid.
- Alpha-arbutin.
- Kojic acid.
- Glycolic acid.
- Salicylic acid.
- Ascorbic acid.
- Mandelic acid.
- Phytic acid.
- Retinol.
- Ferulic acid.

INDICATION

Hyperpigmentations in low phototypes (I-III).



FERULAC PEEL



Maximum Antioxidant efficiency at all Skin level

PEELS

FERULAC PEEL



FERULAC CLASSIC

60 ml - pH 4.0 - 5.0

COMPOSITION

- 12% Ferulic acid.
- 5% Phloretin.



FERULAC PLUS

60 ml - pH 1.5 - 2.5

COMPOSITION

- 8% Ferulic acid.
- 5% Phloretin.
- 5% Malic acid.
- 5% Citric acid.
- 5% Lactic acid.
- 0.2% Retinol.

INDICATION

Photoageing.
Melasma and sun spots.



PROPERTIES of ferulic acid

NANOTECH

Ferulic acid has antioxidant properties: it protects the skin from free radical aggression, inhibits and neutralizes their action and enhances the effects of vitamins C and E. It protects the skin from UVB and UVA radiation, contributing to minimizing damage caused by the sun and protecting the cell's DNA. Controls the tyrosinase activity, preventing and lightening unwanted pigmentations. It also has a pro-apoptotic effect on cancer cells.

PROPERTIES of phloretin

Phloretin promotes the penetration of the rest of the ingredients by adhering to lipid surfaces and altering the dipole potential of lipid bilayers. It inhibits the activity of elastase, enzyme in charge of elastic fiber degradation. In addition, it has antioxidant properties.



RETISES

Discolorations • Wrinkles • Extensive Damage

RETISES

IMPORTANT

RETISES CT YELLOW PEEL can be used as a stand alone peel as well in combination with other peels to increase the effectivity of the protocol.



RETISES CT YELLOW PEEL

6 x 2 ml/10 x 1ml- Ampoules
6 x 5 ml/10 x 3ml - Sachets
pH-5,0-6,0

COMPOSITION

Ampoules:

- 10 % Ascorbyl glucoside.
- 5 % Niacinamide.

Sachets:

- 4% Retinol.
- 1% Retinyl propionate .

INDICATIONS

For treating skin aging manifestations, hyperpigmentations and distension stretch marks.



RETISES FORTE CREAM

15 ml - pH 3,7-4,3

COMPOSITION

- 10% Retinol.
- 1% Retinyl propionate.

INDICATIONS

For treating skin aging manifestations, hyperpigmentation and distension stretch marks.



RETISES NANOPEEL 1% GEL

15 ml

COMPOSITION

Liposomal retinol

INDICATIONS

Photoaging, Melasma, sunspots





COMBINATION PEELS

ARGIPEEL · LACTIPEEL



ARGIPEEL

100 ml - pH 2.25 - 2.75

COMPOSITION

- 20% Arginine.
- 20% Lactic acid.
- Urea.
- Aloe vera.
- Allantoin.

INDICATIONS

Sensitive skins intolerant to other peels for redefining the surface of the skin.



LACTIPEEL

100 ml - pH 2.0-3.0

COMPOSITION

- 80% Lactic acid.
- 11% DMAE.

INDICATIONS

Dehydrated skins, melasma, and signs of skin aging (wrinkles, loss of firmness and/or luminosity...).

SPA PEEL



SPA PEEL CLASSIC

60 ml - pH 0.5-1.5

COMPOSITION

- 15% Salicylic acid.
- 8% Pyruvic acid.
- 5% Lactic acid.
- Retinoic acid.

INDICATIONS

Photoaging, expression wrinkles. Actinic-like roughness, acne, seborrheic skin, and acne scars.



SPA PEEL LIGHTENING

60 ml - pH 0.5-1.5

COMPOSITION

- 15% Salicylic acid.
- 10% 4n-butylresorcinol.
- 8% Pyruvic acid.
- 5% Lactic acid.
- 0.1% Retinoic acid.
- 2% Undecylenoyl phenylalanine.
- Retinol
- Diacetyl boldine.

INDICATIONS

Hyperpigmentations, melasma (chloasma), melanin pigmentations induced by perfumes or cosmetics. Photoaging marks.

PYRUVIC PEEL

IMPORTANT

To enhance the penetration of pyruvic acid into the skin, it is recommended to first apply a peel with salicylic acid (**salipeel**, **salipeel DS**, **spa peel classic** or **spa peel lightening**).



PYRUVIC PEEL LA

60 ml - pH <1.0

COMPOSITION

- 25% Pyruvic acid.
- 25% Lactic acid..

INDICATIONS

Sensitive skins, dark skins (phototypes IV to VI). Preparatory or initiation peel for subsequent treatments with higher concentrations of pyruvic acid.



PYRUVIC PEEL P

60 ml - pH <1.0

COMPOSITION

- 40% Pyruvic acid.
- 5% Lactic acid.

INDICATIONS

Medium depth wrinkles, inflammatory / non-inflammatory acne, and acne scars.



PYRUVIC PEEL PLUS

60 ml - pH <1.0

COMPOSITION

- 50% Pyruvic acid.
- 5% Lactic acid.

INDICATIONS

Deep wrinkles, flaccidity, acne scars, and stretch marks.

TCA



TCA
25%
60 ml - pH <1.0

COMPOSITION

· 25% Trichloroacetic acid.

INDICATIONS

Photoaging and melasma.



TCA
35%
60 ml - pH <1.0

COMPOSITION

· 35% Trichloroacetic acid.

INDICATIONS

Photoaging and melasma.



TCA
50% CROSS
60 ml - pH <1.0

COMPOSITION

· 50% Trichloroacetic acid.

INDICATIONS

Acne scars, deep wrinkles, xanthelasma and syringomas.

GLYCOLIC ACID



GLYCOLIC ACID
25%
60 ml - pH 1.0-1.5

COMPOSITION

· 25% Glycolic acid.



GLYCOLIC ACID
50%
60 ml - pH <1.0

COMPOSITION

· 50% Glycolic acid.



GLYCOLIC ACID
70%
60 ml - pH <1.0

COMPOSITION

· 70% Glycolic acid.

INDICATIONS

Photoaging
Melasma and sunspots.
Acne.



CHEMICAL ADDITIVES

Chemical Additives

ADDITIVES

IMPORTANT



NANOTECH



Powder additives are mixed with a gel peeling at the time of application. 1/4 measurement of the additive, + 1/2 measurement of the peeling.

C-PEEL DELIVERY SERUM

125 ml

COMPOSITION

- Vitamin C.
- Hyaluronic acid.
- Mullberry extract.
- Palmitoyl tripeptide-3 (Syn-Coll®).
- Panthenol.

INDICATIONS

Skin aging, hyperpigmentation and dehydration



LUMINOUS ADDITIVE

50 g.

COMPOSITION

- Ascorbic acid.
- Active ingredient activator.

INDICATIONS

Dull and/or photoaged skins.



RESVERADERM ADDITIVE

50 g.

COMPOSITION

- Resveratrol.
- Ascorbic acid.
- Thiocctic acid.
- Citric acid.

INDICATIONS

Photo-damaged, flaccid, and aged skins.



BLEACHING K POWDER ADDITIVE

50 g.

COMPOSITION

- Kojic acid.
- Active ingredient activator.

INDICATIONS

Hyperpigmented skins.

ADDITIVES

IMPORTANT



NANOTECH



Gel or cream additives are applied after rinsing the peel and are not removed afterwards.

LIFTING EFFECT ADDITIVE

100 ml

COMPOSITION

- 13.5 % Lactic acid.
- 10% DMAE.
- Wheat protein.

INDICATIONS

Flaccid and/or aged skins.



ANTIACNE ADDITIVE

50 g.

COMPOSITION

- Nicotinamide.
- Salicylic acid.
- Aloe vera extract.
- Active ingredient enhancer.

INDICATIONS

Acne prone oily skins.



LUMINOUS EFFECT AMPOULES

5x2 ml

COMPOSITION

- 12 % Ascorbic acid.

INDICATIONS

Dull and/or photoaged skins.



DEPIGMENTING AMPOULES

5x2 ml.

COMPOSITION

- 5% Alpha-arbutin.
- 3% Ascorbyl glucoside.
- Licorice extract.

INDICATIONS

Hyperpigmented skin.

MASKS



NANOMASK



NANOTECH



NANOMASK DAESSES

1 unit

COMPOSITION

- DMAE.

INDICATION

Flaccid and/or aged skin.

PROPERTIES

- **DMAE** increases the superficial firmness of the skin (firming action), stimulates muscular activity generating a stretching and lifting effect (tensing effect), increases skin's elasticity, reduces wrinkles, and stabilizes cell membranes repairing the damage caused to collagen by free radicals (antioxidant action).



NANOTECH



NANOMASK VITAMIN C

1 unit

COMPOSITION

- Ascorbic acid.

INDICATION

Photoaged skin (with wrinkles and pigmentations) and/or dull skin.

PROPERTIES

- **Vitamin C** acts as a skin protector against radiation, preventing oxidative damage, stimulating collagen and elastin synthesis. It moisturises the skin by helping the formation of the lipid barrier in the stratum corneum, helping to restructure and moisturise the epidermis. Also, it inhibits melanogenesis and eases epithelialization.



NANOTECH



NANOMASK ALOE VERA

1 unit

COMPOSITION

- Aloe vera.
- Chitosan.

INDICATION

Sensitive skin. Skin that is irritated after medical and/or cosmetic procedures (chemical peels, microdermabrasions, laser therapy, photodynamic therapy, etc.)

PROPERTIES

- **Aloe vera** penetrates deeply into all skin layers, moisturising them and reestablishing the hydrolipidic balance (moisturising action). It also stimulates tissue regeneration and speeds up cellular turnover (epithelializing action), interrupts bacterial growth (bacteriostatic action), reduces swelling (soothing action), relieves itching, and diminishes pain (anesthetic action).
- **Chitosan** has moisturising, bacteriostatic and fungistatic properties.

MASKS

NANOMASK



NANOTECH



NANOTECH



NANOTECH



NANOMASK COLLAGEN BOOSTER

1 unit

COMPOSITION

- Restructuring complex.
- Ginkgo biloba.
- Centella asiatica.

INDICATION

Prevention of skin ageing.

PROPERTIES

- **The restructuring complex** stimulates the synthesis in fibroblasts of connective tissue molecules, specifically collagen I, III, IV, fibronectin, and glycosaminoglycans.
- **Centella asiatica** strengthens the stimulating effect of the restructuring complex on collagen and GAGs synthesis.
- **Ginkgo biloba** captures the free radicals present in the skin, protecting it from premature ageing.

NANOMASK YOUTH BOOSTER

1 unit

COMPOSITION

- Collagen.
- Soy isoflavones.
- Palmitoyl tetrapeptide-3.

INDICATION

Dry and aged skin.

PROPERTIES

- **Collagen and palmitoyl tetra-peptide-3** stimulates fibroblasts to enhance synthesis of collagen, elastin and GAGs.
- **Soy isoflavones** have important antioxidant properties that protect the skin from the damaging action of free radicals. They stimulate cellular turnover and lessen support tissue degradation. Also, they increase the elasticity and moisture of the skin, reducing wrinkles and dermal flaccidity.

NANOMASK HYALURONIC ACID

1 unit

COMPOSITION

- Hyaluronic acid.
- Panthenol.

INDICATION

Dehydrated and/or damaged skin.

PROPERTIES

- **Hyaluronic acid (HA)** acts at different skin levels thanks to its formulation with 3 different molecular weights: non-liposomal HA provides instant softness and hydration (level 1); low molecular weight liposomal HA reduces fine wrinkles (level 2); very low weight liposomal HA provides intense hydration and repairs deep wrinkles (level 3).
- **Panthenol** has hydrating and moistening properties.

NANOMASK



NANOTECH



NANOMASK PLACENSES

1 unit

COMPOSITION

- Placenta extract.
- Silicon.
- Hyaluronic acid.
- Niacinamide.

INDICATION

Aged and/or dehydrated skin.

PROPERTIES

- **Placenta extract** is rich in peptides and growth factors that activate the cellular functions, stimulating the production of collagen fibers, elastin, and GAGs for a firmer, more elastic skin.
- **Silicon** helps to restructure the connective tissue and stimulates fibroblasts to synthesize collagen, while protecting skin from the attack of free radicals (antiglycation activity).
- **Hyaluronic acid** has a natural effect on the skin, attracting water molecules to the stratum corneum and stimulating the synthesis of ceramides, improving and modulating the barrier function.
- **Niacinamide** has anti-inflammatory properties.



NANOTECH



NANOMASK BTSES

1 unit

COMPOSITION

- Relaxing peptides.
- Retinol.

INDICATION

Skin with expression wrinkles.

PROPERTIES

- **Cutting-edge relaxing peptides** that act at pre-synaptic and post-synaptic stage decreasing muscle stimulus and debilitating the action of neuromuscular transmission. They inhibit the association between the contractile proteins found in muscle cells.
- **Retinol** accelerates mitosis, increases enzymatic activity, and normalises keratinisation. It stimulates collagen and elastin synthesis, preventing the appearance of wrinkles. Also, it fades blemishes by regulating the proliferation and movement of altered melanocytes.

NANOPORE



NANOPORE



NANOPORE STYLUS

1 unit

COMPOSITION

- Nanopore Stylus device.
- Connection cables.
- 5 needle tips containing 6 needles.
- 5 protective caps.
- 1 focal stamp.
- 1 base.

INDICATION

Wrinkles, photoageing, dilated pores, melasma, alopecia, flaccidity, stretch marks, scars and acne scars.

PROPERTIES

- **Double action mechanism**
Physico-mechanical stimulus: Microperforation stimulates angiogenesis by releasing endothelial growth factors (VEGF). The microperforation of the corneum stratum activates the auto-repairing mechanism of the skin, which is responsible for producing new collagen. In addition, it increases permeability creating micro-channels which facilitate the penetration of active ingredients to the deepest layers of the skin.
- **Needles** are lubricated with a combination of growth factors which reduce pain and epidermal trauma. Personalised treatment. Growth factor cocktail. Transport of active ingredients on dermic and epidermic levels.



6 NEEDLE TIPS ROUNDED

5 units/ 25 units

COMPOSITION

- Base and cap: Polyoxymethylene (POM), high rigidity crystalline thermoplastic.
- Needles: Stainless steel AISI 316 Ti (austenitic stainless steel, stabilized with titanium). Sterilization method: ethylene oxide.

INDICATION

Wrinkles, photo-ageing, dilated pores, melasma, alopecia, flaccidity, stretch marks, scars and acne scars.

PROPERTIES

- Microperforation stimulates angiogenesis by releasing endothelial growth factors (VEGF). The microperforation of the corneum stratum activates the auto-repairing mechanism of the skin, which is responsible for producing new collagen. In addition, it increases permeability creating micro-channels which facilitate the penetration of active ingredients to the deepest layers of the skin.



10 NEEDLE TIPS LINEAL

5 units/ 25 units

COMPOSITION

- Base and cap: Polyoxymethylene (POM), high rigidity crystalline thermoplastic.
- Needles: Stainless steel AISI 316 Ti (austenitic stainless steel, stabilized with titanium). Sterilization method: ethylene oxide.

INDICATION

Crow's feet, stretch marks, alopecia, bar-code wrinkles, flaccidity.



DISPOSABLE NOZZLE ROUNDED

5 units/ 25 units

COMPOSITION

- ABS (acrylonitrile-butadiene-styrene): Thermoplastic with high impact resistance.

INDICATION

Use with rounded needle nozzle.



DISPOSABLE NOZZLE LINEAL

5 units/ 25 units

INDICATION

Use with lineal needle nozzle.

PROPERTIES

- It limits the length of the needle tips, ensuring optimal depth and preventing tissue damage.

MESO CIT ✨

Booster treatment for collagen induction therapies



WITH GROWTH FACTORS ENCAPSULATED IN LIPOSOMES

MESO CIT



NANOTECH



NANOTECH



NANOTECH

MESO CIT BASIC SOLUTION

30 ml / 5x10 ml

COMPOSITION

- Arginine.
- Panthenol.
- Tetrapeptide-3.
- Hyaluronic acid.
- Silicon.
- Zinc.

INDICATION

Needle lubricant for transdermic needles. Prepares the skin that will be exposed to microneedling. Prevents irritation, enables collagen synthesis and epithelialisation.

PROPERTIES

- **Panthenol** has hydrating, moistening and conditioning properties.
- **Hyaluronic acid** has a natural moisturising effect on skin, attracting water molecules toward the corneal layer.
- **Organic silicon** is part of the extracellular matrix, protects and reinforces collagen fibers, elastin and proteoglycans. It improves the regeneration process and normalises cellular metabolism of aged tissue. In addition, its anti-inflammatory action diminishes interleukins and reduces erythema. It maintains water levels, providing tissues with hydration.

MESO CIT WH TGF-β2

30 ml / 5x10 ml

COMPOSITION

- Arginine.
- Panthenol.
- Mimetic peptides.
- Hyaluronic acid.
- Methylsilanol.
- Zinc.
- TGF-β2 Growth factor.

INDICATION

Wrinkles, flaccidity (body and facial) and chronoageing.

PROPERTIES

- **Fibroblast stimulation** increases collagen fibers and accomplishes the regeneration of dermal structures.
 - Increases cellular activity.
 - Smooths and improves texture.
 - Restores turgidity and elasticity.

MESO CIT WH EGF

30 ml / 5x10 ml

COMPOSITION

- Arginine.
- Panthenol.
- Mimetic peptides.
- Hyaluronic acid.
- Methylsilanol.
- Zinc.
- EGF growth factor.

INDICATION

Wrinkles and flaccidity. Used in combination with MESO CIT serum WH TGF-β2.

PROPERTIES

- **EGF growth factor** stimulates cellular growth, proliferation and differentiation by bonding with the receptor in the target cell surface.
 - Accelerates renovation speed of skin and epithelialization.
 - Stimulates collagen production.
 - Helps to prevent photodamage, expression lines and wrinkles.

MESO CIT



NANOTECH



NANOTECH



NANOTECH

MESO CIT TIMP-2

30 ml / 5x10 ml

COMPOSITION

- Growth factors: Timp-2, TGF-β2, EGF, HGH, GMCSF.
- Ergothioneine.
- Resveratrol.
- Hyaluronic acid.
- Panthenol.
- Centella asiatica.
- Quercetin.
- Malus domestica extract.
- Mimetic peptides.

INDICATION

Photoaging: wrinkles, flaccidity and hyperpigmentations.

PROPERTIES

- **Grow factor TIMP-2 (Tissue Inhibitor of Metallo Proteinases-2)**. It favors collagen synthesis type I and improves wrinkles and skin elasticity.

MESO CIT EVEN SKIN TONE

30 ml / 5x10 ml

COMPOSITION

- Tranexamic acid.
- 4n-butylresorcinol.
- Panthenol.
- Alpha-arbutin.
- Hyaluronic acid.
- Methylsilanol.
- Zinc.
- Growth factor HGH.

INDICATION

Dyschromia and hyperpigmentations.

PROPERTIES

- **HGH growth factor** accelerates the epidermal renewal rate and the epithelization of the skin (depigmenting action). It also has rejuvenating action as it promotes the synthesis of collagen, elastin and fibronectin, lessening the appearance of wrinkles and improving the skin's elasticity.
- **Tranexamic acid** blocks the production of plasmin (plasminogen system) inhibiting the arachidonic acid cascade and at the same time, the inflammation and angiogenic circuit. It accelerates the recovery of the skin's barrier function.
- The combination of depigmenting agents such as **4n-butylresorcinol** and **Alpha-arbutin** inhibit the melanogenesis due to the blocking of enzyme steps during the synthesis process.

MESO CIT RU

30 ml / 5x10 ml

COMPOSITION

- Azelaic acid.
- 4n-butylresorcinol.
- Diacetyl boldine.
- Undecylenoyl Phenylalanine.
- Stable vitamin C.
- Niacinamide.
- Retinol.
- Glycyrhretinic acid.
- Morus alba extract.

INDICATION

Hyperpigmentations, melasma and dyschromia.

PROPERTIES

- **4n-butylresorcinol** inhibits melanogenesis by blocking the enzymatic phases during melanin synthesis processes.
- **Retinol** accelerates mitosis, increasing enzymatic activity and normalizing keratinisation. It attenuates blemishes by modulating proliferation and mobility of affected melanocytes.
- **Vitamin C** prevents oxidative damage, stimulates collagen synthesis, evens out skin tone and improves hydration and skin smoothness.
- **Azelaic acid** has an anti-inflammatory and anti-radical effect, fighting reddened skin. It has antibacterial action and inhibits tyrosinase.

MESO CIT

Range of sterile solutions with growth factors encapsulated in liposomes, combined with a powerful active ingredient complex, capable of penetrating and acting on the deepest layers of the skin. The combination of several growth factors leads to positive synergies in treatments with rollers, mesotherapy, microneedling devices, etc.



NANOTECH



MESO CIT K

30 ml / 5x10 ml

COMPOSITION

- Growth factor TGF-β3.
- Superoxide dismutase.
- Onion extract.
- Panthenol.
- Stable vitamin C.
- Resveratrol.
- Copper.
- Zinc.
- Quercetin
- Hyaluronic acid.

INDICATION

Scars, hypertrophic scars and keloids.

PROPERTIES

- **TGF-β3 (Transforming Growth Factor Beta 3)**. It adds elasticity to the skin, improving the aspect of scars and keloids. It reduces accelerated and massive growth of collagen and fibronectin, helping normal skin regeneration.
- **Onion extract** regulates the metabolism of collagen: effective on hypertrophic scars and keloids since it inhibits collagen formation.
- **Superoxide dismutase (ILK-10)** has an anti-inflammatory effect, inhibiting the agents responsible for inflammation. At the same time, it fights and destroys excess free radicals generated during the inflammatory process.



NANOTECH



MESO CIT HAIR CARE

20 ml

COMPOSITION

- Arginine.
- Panthenol.
- Hyaluronic acid.
- Methylsilanol amino acid.
- Zinc.
- Morus alba extract.
- Follistatin.

INDICATION

Hair loss. Alopecia.

PROPERTIES

- **Follistatin** is a monomeric glycoprotein which joins with ligands from the TGF-β family and regulates their activity by inhibiting their access to signal receptors. It stimulates stem cells in the pilous follicle.

NANO MESO SOLUTION



NANOTECH



NANOTECH



NANOTECH



NANO MESO SOLUTION C-VIT

5 x 10 ml

COMPOSITION

- Ascorbic acid.

INDICATION

Prevention and treatment of photo-ageing skin, melasma, acne, and acne scars.

PROPERTIES

· **Vitamin C** acts as a skin protector by neutralising free radicals, preventing oxidative damage. Stimulates collagen synthesis and improves the skin's elasticity. Moisturises the skin by helping the formation of the lipid barrier in the stratum corneum, helping to restructure and moisturise the epidermis. Interferes in skin pigmentation, inhibiting tyrosinase and eases epithelization. Reduces the erythema (redness) caused by UV radiation.



NANO MESO SOLUTION DAESSES

5 x 10 ml

COMPOSITION

- Dimethylaminoethanol.

INDICATION

Treatment for flaccid and/or aged skins.

PROPERTIES

· **DMAE** increases acetylcholine synthesis, stimulating the contraction of epidermal keratinocytes (immediate lifting effect) and muscle activity (long-lasting lifting effect). It regenerates the dermal matrix enabling the production of new collagen and inhibiting protein cross-linking.



NANO MESO SOLUTION RETISES

5 x 10 ml

COMPOSITION

- Retinol.

INDICATION

Treatment of skin ageing, acne, hyperpigmentation, acne scars, and stretch marks.

PROPERTIES

· **Retinol** accelerates mitosis, increases enzymatic activity, and normalises keratinization. Prevents and reduces the depth of the wrinkles and scars, and reduces the levels of collagenase. Fades blemishes by modulating the proliferation and movement of altered melanocytes. Reverts the damage caused by the sun, restoring the levels of vitamin A reduced by UVA radiation.

NANO MESO SOLUTION



NANOTECH



NANOTECH



NANOTECH



NANO MESO SOLUTION SILORGSES

5 x 10 ml

COMPOSITION

- Organic silicon.

INDICATION

Prevention and treatment of skin ageing, cellulite, stretch marks, flaccidity, and dehydration.

PROPERTIES

· **Organic silica** is one of the components of the extracellular matrix. It protects and strengthens elastin fibres, collagen, and proteoglycans. Improves the regeneration process and normalises cell metabolism in aged tissues. Induces lipolysis, stimulating the hydrolysis of triglycerides. Reorganizes and strengthens cell membranes against the attack of free radicals and prevents lipid peroxidation. Reduces the production of interleukins (anti-inflammatory action) and reduces erythema caused by UV radiation. And maintains the level of water by moisturising the tissue.

NANO MESO SOLUTION PLACENSES

5 x 10 ml

COMPOSITION

- Placenta extract.

INDICATION

Treatment of aged skin and hair loss.

PROPERTIES

· **Placenta extract** is rich in peptides and growth factors which activate cell functions in charge of the production of collagen fibres, elastin, and GAGs, for a firmer, more elastic skin. Stimulates hair growth by intensifying the circulation of blood and promoting the internal respiration of the scalp. Nourishes and strengthens hair.

NANO MESO SOLUTION SESKAVEL MULBERRY

5 x 10 ml

COMPOSITION

- Morus alba extract.
- Nicotinic acid.
- Panthenol.
- Pyridoxine.
- Zinc.

INDICATION

Hair loss.

PROPERTIES

· **Morus alba extract** has an effect on the hair cycle, shortening the telogen phase and lengthening the anagen phase.

· **Nicotinic acid** increases blood microcirculation and improves nutrient supply.

· **Acid zinc and vitamin B6 (Pyridoxine)** inhibit 5-Alpha reductase preventing the conversion of testosterone and dihydrotestosterone and the activity of the androgen receptors.

· **Panthenol** increases the quality of hair, moisturising and conditioning it.

NANO MESO SOLUTION



NANOTECH



NANOTECH



NANOTECH



NANO MESO SOLUTION PPC-LIPO

5 x 10 ml

COMPOSITION

· Phosphatidylcholine.

INDICATION

Treatment of cellulite and localized adiposities.

PROPERTIES

· **Phosphatidylcholine** is a lipolytic active ingredient which acts on a fundamental level, emulsifying solid fat deposits into a poorly dense oleo-aqueous mass, easing their solubility, transport, and elimination through the natural routes in the organism.

NANO MESO SOLUTION BTSES

5 x 10 ml

COMPOSITION

· Relaxing anti-wrinkle peptides.

INDICATION

Treatment of thin wrinkles and expression lines.
Prevents ageing.

PROPERTIES

· **The latest generation relaxing peptides** act by reducing the muscle stimuli and weakening the neuromuscular transmission activity. It prolongs the lasting effects of the treatments with botulinic toxin.

NANO MESO SOLUTION D-PANTHENOL

5 x 10 ml

COMPOSITION

· Panthenol.

INDICATION

Treatment for hair loss.

PROPERTIES

· **Panthenol** has moisturising, moistening and conditioning properties that improve hair quality, providing flexibility, thickness, shine and a more silky appearance.

Nano meso solutions

A range of liposomal sterile solutions with high concentrations of active ingredients encapsulated in unilamellar, flexible nanosomes of regular size. Designed to be used in transdermal mesotherapy in combination with rollers, electroporation, iontophoresis, sonophoresis.

TCA MADRID SIMPLE PEEL SOFT · MEDIUM · FORTE

New TCA-Boost system for the treatment
of ageing, pigmentations and scars



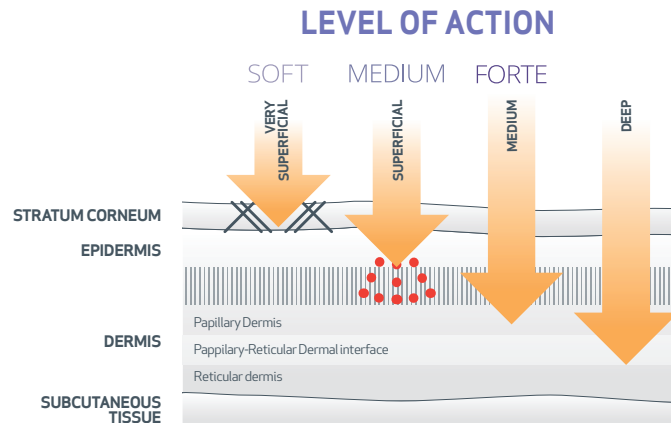
Speed, safety and efficiency to the professionals

WHAT IS THE TCA-BOOST SYSTEM?

A **Peel system with synergic action** which enables to blend in one application TCA with a Booster solution rich in AHAs, vitamin C and phytic acid, in order to reduce the end concentration of acids, thus achieving the maximum benefits and with the minimum possible adverse effects.

A DIFFERENT PEELING FOR EVERY NEED

PRESENTATION	% FINAL TCA
SOFT	7.5%
MEDIUM	15%
FORTE	30%



RESULTS

SOFT

- Δ Revitalising action for lacklustre, sallow skin.
- Δ Removes fine wrinkles.
- Δ Smoothes the skin's appearance

MEDIUM

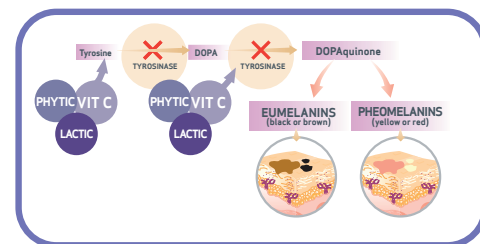
- Δ Anti-ageing action: Reduces wrinkles and lights up surface pigmentations.
- Δ Sebum regulating action: Clears black heads.

FORTE

- Δ Lights up strong pigmentations.
- Δ Reduces deep scar's.
- Δ Reduces the wrinkles depth.
- Δ Tensoring and firming action.

EFFECTS ON THE SKIN

- ✓ **Greater TOLERANCE**
 - Lesser irritation and skin redness.
 - Lesser side effect potential.
- ✓ **Greater KERATOLYTIC power**
 - Dissolves the matter that keeps the cells together in the stratum corneum.
 - Re-shapes the epidermis.
 - Stimulates epidermic exchange.
- ✓ **Greater ANTI-AGEING power**
 - Stimulates the production of collagen, elastin and hyaluronic acid.
- ✓ **Greater SEBUM REGULATING power**
 - Minimises the levels of sebum in the sebaceous gland.
 - Reduces the level of P.acnes.
- ✓ **Greater DEPIGMENTING power**
 - Inhibits the tyrosinase action.

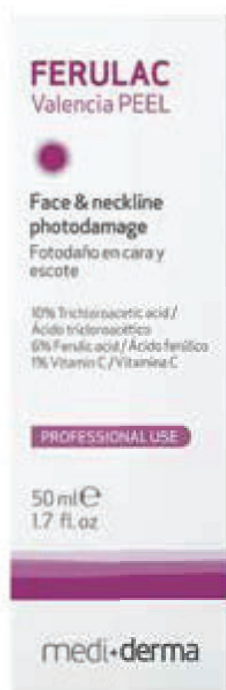


FERULAC

Valencia PEEL

Synergy of antioxidant and keratolytic active ingredients
to put an end to photodamage in face, neckline and hands

NEW



Enhances results, reducing adverse effects



COMPOSITION

- 10% Trichloroacetic acid
- 6% Ferulic acid
- 1% Vitamin C

FERULIC ACID & VITAMIN C (*e-VitC*)

✓ Higher ANTIOXIDANT strength

- Protects skin from photo-damage and reduces up to **40%** of the thymine dimers from the cells DNA.
- Neutralizes the action of free-radicals.

80%
ROS reduction
(exposure to UVA)

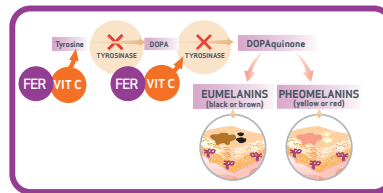
45%
ROS reduction
(exposure to UVB)

x4
ANTIOX
protection

SYNERGIC ACTIVITY OF THE FOLLOWING INGREDIENTS

✓ Higher DEPIGMENTING strength

- Inhibits the activity of tyrosinase.

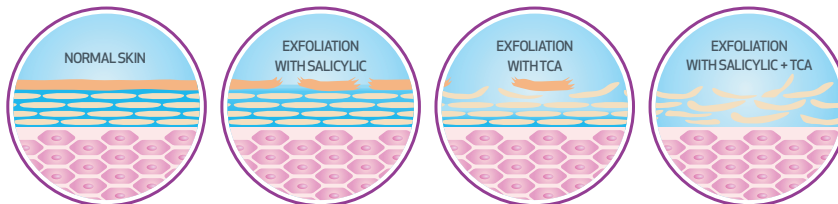


Decreases
Tyrosinase
level
47.5%

TCA & SALICYLIC ACID

✓ Higher KERATOLYTIC strength

- Dissolves the matter that keeps the cells together in the corneum stratum.
- Shifts the epidermis cells.
- Stimulates epidermic exchange.



FERULIC ACID & VITAMIN C (*e-VitC*) & TCA & SALICYLIC ACID

✓ Higher ANTI-AGEING strength

- Stimulation of new collagen, elastin and hyaluronic acid.

✓ Higher TOLERANCE

- Lesser irritation and redness without risk of hyperpigmentation.
- Suitable for ALL SKINTYPES.

TRX PRODUCT LINE

The power of tranexamic acid
for a **flawless complexion**



COMPREHENSIVE LINE OF PRODUCTS CONTAINING **TRANEXAMIC ACID**

MELASPEEL TRX



MELASPEEL TRX

60 ml pH 2.0 - 3.0

COMPOSITION

9%	Citric Acid
9%	Lactic Acid
8%	Tranexamic Acid
5%	Mandelic Acid
2%	Salicylic Acid

INDICATION

Resistant Hyperpigmentations with vascular component.



MELASES TRX booster peel

50 ml

COMPOSITION

8%	Tranexamic Acid
9%	Lactic Acid
3%	Citric Acid
2%	Ferulic Acid
1%	Withania Somnifera
1%	Pinus Pinaster Bark Extract

INDICATION

Depigmenting Booster
Intense moisturizing

SESGLICOPEEL CLASSIC



100 ml

- 1 Clean the skin with **Sensyses Classic Cleanser**.
- 2 Degrease the skin with **Degreasing Solution**.
- 3 Protect sensitive areas with **Silkses Moisturising Skin Protector** (lips and nostrils).
- 4 Measure 2-3 ml of **Sesglicopeel Classic** and pour it in a glass bowl.

Optional Step

- Any of the additive (**Glowing powder** / **Resveraderm powder** / **Depigmenting K powder** / **Anti-acne Powder** / **Lifting effect gel**) can be mixed with it depending upon the indication.
- The gel and additive has to be taken in a ratio of 4:1 and the additive powder needs to be selected based upon the result desired.

- 5 With either a brush or with fingers, apply the peel on the face with a gentle massage.
- 6 Leave the peel on the face for 8-10 mins, a mild erythema can be noticed (Refer Appendix).
- 7 After the exposure time, clean the peel with water.
- 8 Neutralisation of the peel with **Neutralizing Lotion** can be done to complete the procedure (Optional step: depending upon patient compliance).

Sealing (Optional)

- For sealing of the treatment, please refer to Appendix.
- The contact time of the sealer used in the above step should be 6-8 hrs.

- 9 Post contact time, the patient can clean the face only with water or soap free cleanser.

SESGLICOPEEL S

- 1 Clean the skin with **Sensyses Classic Cleanser**.
- 2 Degrease the skin with **Degreasing Solution**.
- 3 Protect sensitive areas with **Silkses Moisturising Skin Protector** (lips and nostrils).
- 4 Measure 2-3 ml of **Sesglicopeel S** and pour it in a glass bowl.

Optional Step

- Any of the additive (**Glowing powder** / **Resveraderm powder** / **Depigmenting K powder** / **Anti-acne Powder** / **Lifting effect gel**) can be mixed with it depending upon the indication.
- The gel and additive has to be taken in a ratio of 4:1 and the additive powder needs to be selected based upon the result desired.

- 5 With either a brush or with fingers, apply the peel on the face with a gentle massage.
- 6 Leave the peel on the face for 8-10 mins, a mild erythema can be noticed (Refer Appendix).
- 7 After the exposure time, clean the peel with water.
- 8 Neutralisation of the peel with **Neutralizing Lotion** can be done to complete the procedure (Optional step: depending upon patient compliance).

Sealing (Optional)

- For sealing of the treatment, please refer to Appendix.
- The contact time of the sealer used in the above step should be 6-8 hrs.

- 9 Post contact time, the patient can clean the face only with water or soap free cleanser.



100 ml

SESGLICOPEEL K



100 ml

- 1 Clean the skin with **Sensyses Classic Cleanser**.
- 2 Degrease the skin with **Degreasing Solution**.
- 3 Protect sensitive areas with **Silkses Moisturising Skin Protector** (lips and nostrils).
- 4 Measure 2-3 ml of **Sesglicopeel K** and pour it in a glass bowl.

Optional Step

- Any of the additive (Glowing powder / Resveraderm powder / Depigmenting K Powder / Anti-acne Powder / Lifting effect gel) can be mixed with it depending upon the indication.
- The gel and additive has to be taken in a ratio of 4:1 and the additive powder needs to be selected based upon the result desired.

- 5 With either a brush or with fingers, apply the peel on the face with a gentle massage.
- 6 Leave the peel on the face for 8-10 mins, a mild erythema can be noticed (Refer Appendix).
- 7 After the exposure time, clean the peel with water.
- 8 Neutralisation of the peel with **Neutralizing Lotion** can be done to complete the procedure (Optional step: depending upon patient compliance).

Sealing (Optional)

- For sealing of the treatment, please refer to Appendix.
- The contact time of the sealer used in the above step should be 6-8 hrs.

- 9 Post contact time, the patient can clean the face only with water or soap free cleanser.

SESGLICOPEEL KH

- 1 Clean the skin with **Sensyses Classic Cleanser**.
- 2 Degrease the skin with **Degreasing Solution**.
- 3 Protect sensitive areas with **Silkses Moisturising Skin Protector** (lips and nostrils).
- 4 Measure 2-3 ml of **Sesglicopeel KH** and pour it in a glass bowl.

Optional Step

- Any of the additive (Glowing powder / Resveraderm powder / Depigmenting K powder / Anti-acne Powder / Lifting effect gel) can be mixed with it depending upon the indication.
- The gel and additive has to be taken in a ratio of 4:1 and the additive powder needs to be selected based upon the result desired.

- 5 With either a brush or with fingers, apply the peel on the face with a gentle massage.
- 6 Leave the peel on the face for 8-10 mins, a mild erythema can be noticed (Refer Appendix).
- 7 After the exposure time, clean the peel with water.
- 8 Neutralisation of the peel with **Neutralizing Lotion** can be done to complete the procedure (Optional step: depending upon patient compliance).

Sealing (Optional)

- For sealing of the treatment, please refer to Appendix.
- The contact time of the sealer used in the above step should be 6-8 hrs.

- 9 Post contact time, the patient can clean the face only with water or soap free cleanser.



100 ml

MELASPEEL K

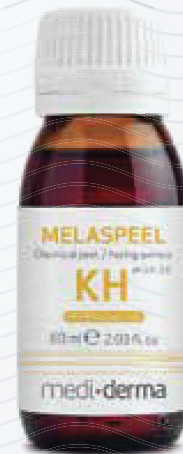


60 ml

- 1 Clean the skin with **Sensyses Classic Cleanser**.
 - 2 Degrease the skin with **Degreasing solution**.
 - 3 Protect sensitive areas with **Silkses Moisturising Skin Protector** (lips and nostrils).
 - 4 Measure 2-3 ml of **Melaspeel K** and pour it in a glass bowl.
 - 5 Apply a uniform layer on the face.
 - 6 Keep the peel on the face for 4-5 minutes. Fanning can be done to quickly dry the peel.
 - 7 Erythema can be noticed on the face. Assess the degree of erythema depending upon which the second coat can be applied on the face if needed. If applied, repeat the steps 5 & 6. Do not repeat more than 2 layers or 4 ml of the peel in a single sitting on higher phototype (Refer Appendix).
 - 8 Neutralise the peel with **Neutralizing Lotion**.
- Sealing (Optional)**
- For sealing of the treatment, please refer to Appendix.
 - The contact time of the sealer used in the above step should be 6-8 hrs.
- 9 Post contact time, the patient can clean the face only with water or soap free cleanser.

MELASPEEL KH

- 1 Clean the skin with **Sensyses Classic Cleanser**.
 - 2 Degrease the skin with **Degreasing Solution**.
 - 3 Protect sensitive areas with **Silkses Moisturising Skin Protector** (lips and nostrils).
 - 4 Measure 2-3 ml of **Melaspeel KH** and pour it in a glass bowl.
 - 5 Apply a uniform layer on the face.
 - 6 Keep the peel on the face for 4-5 minutes. Fanning can be done to quickly dry the peel.
 - 7 Erythema can be noticed on the face. Assess the degree of erythema depending upon which the second coat can be applied on the face if needed. If applied, repeat the steps 5 & 6 (Refer Appendix).
 - 8 Neutralise the peel with **Neutralizing Lotion**.
- Sealing (Optional)**
- For sealing of the treatment, please refer to Appendix.
 - The contact time of the sealer used in the above step should be 6-8 hrs.
- 9 Post contact time, the patient can clean the face only with water or soap free cleanser.



60 ml

MELASPEEL J



60 ml

- 1 Clean the skin with **Sensyses Classic Cleanser**.
 - 2 Degrease the skin with **Degreasing Solution**.
 - 3 Protect sensitive areas with **Silkses Moisturising Skin Protector** (lips and nostrils).
 - 4 Measure 1-2 ml of **Melaspeel J** and pour it in a glass bowl.
 - 5 Apply a uniform layer on the face.
 - 6 Keep the peel on the face for 4-5 minutes. Fanning can be done to quickly dry the peel.
 - 7 Erythema can be noticed on the face. Assess the degree of erythema depending upon which the second coat can be applied on the face if needed. If applied, repeat the steps 5 & 6. Do not repeat more than 2 layers or 4 ml of the peel in a single sitting in higher phototype (Refer Appendix).
 - 8 Neutralise the peel with **Neutralizing Lotion**.
- Sealing (Optional)**
- For sealing of the treatment, please refer to Appendix.
 - The contact time of the sealer used in the above step should be 6-8 hrs.
- 9 Post contact time, the patient can clean the face only with water or soap free cleanser.

TARGET NANOPEEL SYSTEM

- 1 Clean the skin with **Sensyses Liposomal Cleanser**.
- 2 Protect sensitive areas with **Silkses Moisturising Skin Protector** (lips and nostrils).
- 3 Take 2 ml of **Ferulac peel Classic** (Step 1 of Ferulac Peel Booster System) in the glass bowl.
- 4 Apply a uniform layer on the face. Spread evenly until a white mask appears.
- 5 A uniform white mask is an end point of Ferulac peel Classic.
- 6 Next, apply 1-2 coats of **Target Nano Peel Step 1** by spraying the product on the area to be treated (5-8 sprays/coat) Gently massage for just 1 minute to ease the penetration of active ingredients.
- 7 Apply one coat of **Target Nano Peel Step 2** by spraying the product on the area to be treated and then massage.
- 8 Spray **Target Nano Peel Step 2** again but this time focally on the lesions to be treated and massage. (Optional step: To accelerate the result, spray Target Nano Peel Step 2 on a 0.2 mm Dermal roller and use it on melasma without making pressure).
- 9 Apply 1-2 coats of **Target Nano Peel Step 3** by spraying the product on the area to be treated (5-8 sprays/coat).
- 10 Seal the treatment by applying a thin layer of **Target Sealing Cream** & leave to stand for minimum 8 hours.
- 11 Post contact time, the patient can clean the face only with water or soap free cleanser.



1 Kit

SALIPEEL ALCOHOLIC SOLUTION



60 ml

- 1 Clean the skin with **Sensyses Classic Cleanser**.
- 2 Degrease the skin with **Degreasing Solution**. This is an optional step.
- 3 Protect sensitive areas with **SilkSES Moisturising Skin Protector** (lips and nostrils).
- 4 Measure 2-3 ml of **Salipeel alcoholic solution** and pour it in a glass bowl.
- 5 Apply a uniform layer on the face.
- 6 A white mask will appear on the face which is the end point of the peel. Fanning can be done to quickly dry the peel (Refer Appendix).
- 7 The white mask can be cleaned with water. This has no effect on the final result of the peel.
- 8 Neutralise the peel with **Neutralizing Lotion**.

Sealing (Optional)

- For sealing of the treatment, please refer to Appendix.
 - The contact time of the sealer used in the above step should be 6-8 hrs.
- 9 Post contact time, the patient can clean the face only with water or soap free cleanser.

SALIPEEL DS

- 1 Clean the skin with **Sensyses Classic Cleanser**.
- 2 Degrease the skin with **Degreasing Solution**. This is an optional step.
- 3 Protect sensitive areas with **SilkSES Moisturising Skin Protector** (lips and nostrils).
- 4 Measure 2-3 ml of **Salipeel DS** and pour it in a glass bowl.
- 5 Apply a uniform layer on the face.
- 6 A white mask can be appear on the face which is the end point of the peel. Fanning can be done to quickly dry the peel (Refer Appendix).
- 7 The white mask can be cleaned with water. This has no effect on the final result of the peel.
- 8 Neutralise the peel with **Neutralizing Lotion**.

Sealing (Optional)

- For sealing of the treatment, please refer to Appendix.
 - The contact time of the sealer used in the above step should be 6-8 hrs.
- 9 Post contact time, the patient can clean the face only with water or soap free cleanser.



60 ml

SALIPEEL PLUS



60 ml

- 1 Clean the skin with **Sensyses Classic Cleanser**.
- 2 Degrease the skin with **Degreasing Solution**. This is an optional step.
- 3 Protect sensitive areas with **Silkses Moisturising Skin Protector** (lips and nostrils).
- 4 Measure 2-3 ml of **Salipeel Plus** and pour it in a glass bowl.
- 5 Apply a uniform layer on the face.
- 6 A white mask can appear on the face which is the end point of the peel. Fanning can be done to quickly dry the peel (Refer Appendix).
- 7 The white mask can be cleaned with water. This has no effect on the final result of the peel.
- 8 Neutralise the peel with **Neutralizing Lotion**.

Sealing (Optional)

- For sealing of the treatment, please refer to Appendix.
 - The contact time of the sealer used in the above step should be 6-8 hrs.
- 9 Post contact time, the patient can clean the face only with water or soap free cleanser.

MANDELAC SOLUTION

- 1 Clean the skin with **Sensyses Classic Cleanser**.
- 2 Degrease the skin with **Degreasing Solution**.
- 3 Protect sensitive areas with **Silkses Moisturising Skin Protector** (lips and nostrils).
- 4 Measure 2-3 ml of **Mandelac solution** peel and pour it in a glass bowl.
- 5 Apply a uniform layer on the face.
- 6 Keep the peel on the face for 4-5 minutes. Fanning can be done to quickly dry the peel. Another coat can be applied on the face depending upon patient compliance.
- 7 Intense erythema or pseudofrost is the end point (Refer Appendix).
- 8 Neutralise the peel with **Neutralizing Lotion**.

Sealing (Optional)

- For sealing of the treatment, please refer to Appendix.
 - The contact time of the sealer used in the above step should be 6-8 hrs.
- 9 Post contact time, the patient can clean the face only with water or soap free cleanser.



60 ml

MANDELAC C



60 ml

- 1 Clean the skin with **Sensyses Classic Cleanser**.
- 2 Degrease the skin with **Degreasing Solution**.
- 3 Protect sensitive areas with **Silkses Moisturising Skin Protector** (lips and nostrils).
- 4 Measure 2-3 ml of **Mandelac C** peel and pour it in a glass bowl.
- 5 Apply a uniform layer on the face.
- 6 Keep the peel on the face for 4-5 minutes. Fanning can be done to quickly dry the peel. Another coat can be applied on the face depending upon patient compliance.
- 7 Intense erythema or psuedofrost is the end point (Refer Appendix).
- 8 Neutralise the peel with **Neutralizing Lotion**.

Sealing (Optional)

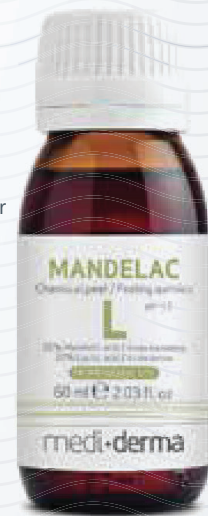
- For sealing of the treatment, please refer to Appendix.
 - The contact time of the sealer used in the above step should be 6-8 hrs.
- 9 Post contact time, the patient can clean the face only with water or soap free cleanser.

MANDELAC L

- 1 Clean the skin with **Sensyses Classic Cleanser**.
- 2 Degrease the skin with **Degreasing Solution**.
- 3 Protect sensitive areas with **Silkses Moisturising Skin Protector** (lips and nostrils).
- 4 Measure 2-3 ml of **Mandelac L** peel and pour it in a glass bowl.
- 5 Apply a uniform layer on the face.
- 6 Keep the peel on the face for 4-5 minutes. Fanning can be done to quickly dry the peel. Another coat can be applied on the face depending upon patient compliance.
- 7 Intense erythema or psuedofrost is the end point (Refer Appendix).
- 8 Neutralise the peel with **Neutralizing Lotion**.

Sealing (Optional)

- For sealing of the treatment, please refer to Appendix.
 - The contact time of the sealer used in the above step should be 6-8 hrs.
- 9 Post contact time, the patient can clean the face only with water or soap free cleanser.



60 ml

MANDELAC T



60 ml

- 1 Clean the skin with Sensyses Classic Cleanser.
- 2 Degrease the skin with Degreasing Solution.
- 3 Protect sensitive areas with SilkSES Moisturising Skin Protector (lips and nostrils).
- 4 Measure 1-2 ml of Mandelac T peel and pour it in a glass bowl.
- 5 Apply quickly and carefully a single uniform layer on the peri-orbital area.
- 6 Keep the peel on the peri-orbital area for 4-5 minutes and look for any visible reaction (Refer Appendix).
- 7 Clean the whole face with water followed by neutralising the peel with Neutralizing Lotion.

Sealing (Optional)

- For sealing of the treatment, please refer to Appendix.
 - The contact time of the sealer used in the above step should be 6-8 hrs.
- 8 Post contact time, the patient can clean the face only with water or soap free cleanser.

MANDELAC EXFOLIATING GEL

- 1 Clean the skin with Sensyses Classic Cleanser.
- 2 Degrease the skin with Degreasing Solution.
- 3 Protect sensitive areas with SilkSES Moisturising Skin Protector (lips and nostrils).
- 4 Measure 2-3 ml of Mandelac Exfoliating gel peel and pour it in a glass bowl.

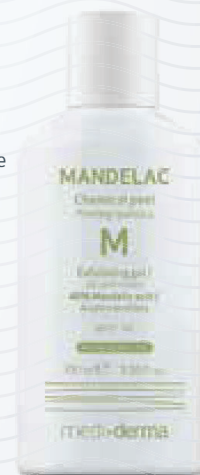
Optional Step

- Any of the additive (Glowing powder / Resveraderm powder / Depigmenting K powder / Anti-acne Powder / Lifting effect gel) can be mixed with it depending upon the indication.
- The gel and additive has to be taken in a ratio of 4:1 and the additive powder needs to be selected based upon the result desired.

- 5 Apply a uniform layer on the face.
- 6 Keep the peel on the face for 5-8 minutes to look for any reaction. Erythema is usually noticed (Refer Appendix).
- 7 After the exposure time, clean the peel with water.
- 8 Neutralisation of the peel with Neutralizing Lotion can be done to complete the procedure (Optional step: depending upon patient compliance).

Sealing (Optional)

- For sealing of the treatment, please refer to Appendix.
 - The contact time of the sealer used in the above step should be 6-8 hrs.
- 9 Post contact time, the patient can clean the face only with water or soap free cleanser.



100 ml

AZELAC M



60 ml

- 1 Clean the skin with **Sensyses Classic Cleanser**.
- 2 Degrease the skin with **Degreasing solution**.
- 3 Protect sensitive areas with **Silkses Moisturising Skin Protector** (lips and nostrils).
- 4 Measure 2-3 ml of **Azelac M** and pour it in a glass bowl.
- 5 Apply a uniform layer on the face.
- 6 Keep the peel on the face for 4-5 minutes. Fanning can be done to quickly dry the peel.
- 7 A white mask or pseudofrost can be noticed. White mask comes easily with a gentle massage while applying the peel (Refer Appendix).
- 8 A second coat can be applied if needed. If applied, repeat the steps 6.
- 9 Neutralise the peel with **Neutralizing Lotion**.

Sealing (Optional)

- For sealing of the treatment, please refer to Appendix.
 - The contact time of the sealer used in the above step should be 6-8 hrs.
- 10 Post contact time, the patient can clean the face only with water or soap free cleanser.

AZELAC EXFOLIATING GEL

- 1 Clean the skin with **Sensyses Classic Cleanser**.
- 2 Degrease the skin with **Degreasing Solution**.
- 3 Protect sensitive areas with **Silkses Moisturising Skin Protector** (lips and nostrils).
- 4 Measure 2-3 ml of **Azelac peel** and pour it in a glass bowl.

Optional Step

- Any of the additive (Glowing powder / Resveraderm powder / Depigmenting K powder / Anti-acne Powder / Lifting effect gel) can be mixed with it depending upon the indication.
- The gel and additive has to be taken in a ratio of 4:1 and the additive powder needs to be selected based upon the result desired.

- 5 Apply a uniform layer on the face.
- 6 Keep the peel on the face for 4-5 minutes to look for any reaction.
- 7 After the exposure time, clean the peel with water.
- 8 Neutralisation of the peel with **Neutralizing Lotion** can be done to complete the procedure (Optional step: depending upon patient compliance).

Sealing (Optional)

- For sealing of the treatment, please refer to Appendix.
 - The contact time of the sealer used in the above step should be 6-8 hrs.
- 9 Post contact time, the patient can clean the face only with water or soap free cleanser.



100 ml

ARGIPEEL



100 ml

- 1 Clean the skin with **Sensyses Classic Cleanser**.
- 2 Degrease the skin with **Degreasing Solution**.
- 3 Protect sensitive areas with **Silkses Moisturising Skin Protector** (lips and nostrils).
- 4 Measure 2-3 ml of **Argipeel** and pour it in a glass bowl.

Optional Step

- Any of the additive (Glowing powder / Resveraderm powder / Depigmenting K powder / Anti-acne Powder / Lifting effect gel) can be mixed with it depending upon the indication.
- The gel and additive has to be taken in a ratio of 4:1 and the additive powder needs to be selected based upon the result desired.

- 5 Apply a uniform layer on the face.
- 6 Keep the peel on the face for 4-5 minutes to look for any reaction.
- 7 After the exposure time, clean the peel with water.
- 8 Neutralisation of the peel with **Neutralizing Lotion** can be done to complete the procedure (Optional step: depending upon patient compliance).

Sealing (Optional)

- For sealing of the treatment, please refer to Appendix.
 - The contact time of the sealer used in the above step should be 6-8 hrs.
- 9 Post contact time, the patient can clean the face only with water or soap free cleanser.

LACTIPEEL

- 1 Clean the skin with **Sensyses Classic Cleanser**.
- 2 Degrease the skin with **Degreasing Solution**.
- 3 Protect sensitive areas with **Silkses Moisturising Skin Protector** (lips and nostrils).
- 4 Measure 2-3 ml of **Lactipeel** and pour it in a glass bowl.

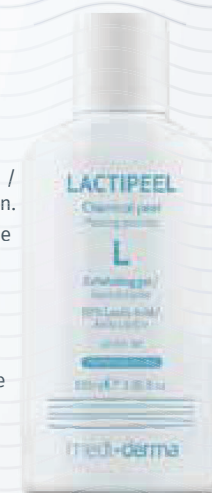
Optional Step

- Any of the additive (Glowing powder / Resveraderm powder / Depigmenting K powder / Anti-acne Powder / Lifting effect gel) can be mixed with it depending upon the indication.
- The gel and additive has to be taken in a ratio of 4:1 and the additive powder needs to be selected based upon the result desired.

- 5 Apply a uniform layer on the face.
- 6 Keep the peel on the face for 4-5 minutes to look for any reaction.
- 7 After the exposure time, clean the peel with water.
- 8 Neutralisation of the peel with **Neutralizing Lotion** can be done to complete the procedure (Optional step: depending upon patient compliance).

Sealing (Optional)

- For sealing of the treatment, please refer to Appendix.
 - The contact time of the sealer used in the above step should be 6-8 hrs.
- 9 Post contact time, the patient can clean the face only with water or soap free cleanser.



100 ml

PYRUVIC LA

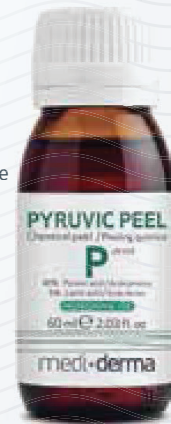


60 ml

- 1 Clean the skin with Sensyses Classic Cleanser.
- 2 Degrease the skin with Degreasing solution.
- 3 Protect sensitive areas with Silkses Moisturising Skin Protector (lips and nostrils).
- 4 Measure 2-3 ml of Pyruvic LA and pour it in a glass bowl.
- 5 Apply a uniform layer on the face.
- 6 Keep the peel on the face for 4-5 minutes. Fanning can be done to quickly dry the peel.
- 7 Mild erythema may appear on the face which is the end point of the peel. Fanning can be done to increase patient compliance.
- 8 If erythema subsides, second layer of Pyruvic LA can be applied on the face. Not more than 3 ml of the peel for higher phototype should be used in a single sitting.
- 9 After 2-3 minutes, neutralise the peel with Neutralizing Lotion*
Sealing (Optional)
 - For sealing of the treatment, please refer to Appendix.
 - The contact time of the sealer used in the above step should be 6-8 hrs.
- 10 Post contact time, the patient can clean the face only with water or soap free cleanser.

PYRUVIC P

- 1 Clean the skin with Sensyses Classic Cleanser.
- 2 Degrease the skin with Degreasing Solution.
- 3 Protect sensitive areas with Silkses Moisturising Skin Protector (lips and nostrils).
- 4 Measure 2-3 ml of Pyruvic P and pour it in a glass bowl.
- 5 Apply a uniform layer on the face.
- 6 Keep the peel on the face for 4-5 minutes. Fanning can be done to quickly dry the peel.
- 7 Mild erythema may appear on the face which is the end point of the peel. Fanning can be done to increase patient compliance.
- 8 If erythema subsides, second layer of Pyruvic P can be applied on the face. Not more than 3 ml of the peel for higher phototype should be used in a single sitting.
- 9 After 2-3 minutes, neutralise the peel with Neutralizing Lotion*
Sealing (Optional)
 - For sealing of the treatment, please refer to Appendix.
 - The contact time of the sealer used in the above step should be 6-8 hrs.
- 10 Post contact time, the patient can clean the face only with water or soap free cleanser.



60 ml

PYRUVIC PLUS



60 ml

- 1 Clean the skin with **Sensyses Classic Cleanser**.
 - 2 Degrease the skin with **Degreasing solution**.
 - 3 Protect sensitive areas with **Silkses Moisturising Skin Protector** (lips and nostrils).
 - 4 Measure 2-3 ml of **Pyruvic Plus** and pour it in a glass bowl.
 - 5 Apply a uniform layer on the face.
 - 6 Keep the peel on the face for 4-5 minutes. Fanning can be done to quickly dry the peel.
 - 7 Mild erythema may appear on the face which is the end point of the peel. Fanning can be done to increase patient compliance.
 - 8 If erythema subsides, second layer of **Pyruvic Plus** can be applied on the face. Not more than 3 ml of the peel for higher phototype should be used in a single sitting.
After 2-3 minutes, neutralise the peel with **Neutralizing Lotion***
- Sealing (Optional)**
- For sealing of the treatment, please refer to Appendix.
 - The contact time of the sealer used in the above step should be 6-8 hrs.
- 10 Post contact time, the patient can clean the face only with water or soap free cleanser.

FERULAC PEEL BOOSTERS SYSTEM

- 1 Clean the skin with **Sensyses Classic Cleanser**.
- 2 Degrease the skin with **Degreasing Solution**.
- 3 Protect sensitive areas with **Silkses Moisturising Skin Protector** (lips and nostrils).
- 4 Take 2 ml of **Ferulac peel Classic** (Step 1 of Ferulac Peel Booster System) in the glass bowl.
- 5 Apply a uniform layer on the face. Spread evenly until a white mask appears.
- 6 A uniform white mask is an end point of **Ferulac peel Classic**.
- 7 Then take 2 ml of **Ferulac peel Plus** (Step 2 of Ferulac Peel Booster System) in the glass bowl.
- 8 Apply a uniform layer on the face. Keep the peel for 4-5 minutes.
- 9 Fanning can be done to quickly dry the peel.
- 10 Neutralise the peel with **Neutralizing Lotion***
- 11 An appropriate sealer can be applied to increase the results (Refer to Appendix).
- 12 Post contact time, the patient can clean the face only with water or soap free cleanser.



60 ml + 60 ml

SPA PEEL CLASSIC



60 ml

- 1 Clean the skin with [Sensyses Classic Cleanser](#).
- 2 Degrease the skin with [Degreasing Solution](#).
- 3 Protect sensitive areas with [Silkses Moisturising Skin Protector](#) (lips and nostrils).
- 4 Measure 2-3 ml of [Spa Peel Classic](#) and pour it in a glass bowl.
- 5 Apply a uniform layer on the face. Once the peel gets dried, a second coat can be applied. Fanning can be done to quickly dry the peel.
- 6 After 4-5 minutes, neutralise the peel with [Neutralizing Lotion](#).

Sealing (Optional)

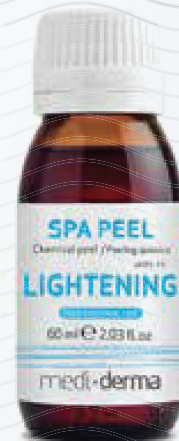
- For sealing of the treatment, please refer to Appendix.
 - The contact time of the sealer used in the above step should be 6-8 hrs.
- 7 Post contact time, the patient can clean the face only with water or soap free cleanser.

SPA PEEL LIGHTENING

- 1 Clean the skin with [Sensyses Classic Cleanser](#).
- 2 Degrease the skin with [Degreasing solution](#).
- 3 Protect sensitive areas with [Silkses Moisturising Skin Protector](#) (lips and nostrils).
- 4 Measure 2-3 ml of [Spa peel Lightening](#) and pour it in a glass bowl.
- 5 Apply a uniform layer on the face. Once the peel gets dried, a second coat can be applied. Fanning can be done to quickly dry the peel (Refer Appendix).
- 6 After 4-5 minutes, neutralise the peel with [Neutralizing Lotion](#).

Sealing (Optional)

- For sealing of the treatment, please refer to Appendix.
 - The contact time of the sealer used in the above step should be 6-8 hrs.
- 7 Post contact time, the patient can clean the face only with water or soap free cleanser.



60 ml

NOMELAN FENOL LIGHT



60 ml

- 1 Clean the skin with **Sensyses Classic Cleanser**.
- 2 Degrease the skin with **Degreasing Solution**.
- 3 Protect sensitive areas with **Silkses Moisturising Skin Protector** (lips and nostrils).
- 4 Measure 2-3 ml of **NMF Light** and pour it in a glass bowl. Apply the peel as a layer on the complete face.
- 5 A mild erythema and frosting (either or both) is the end point (Refer Appendix).
- 6 After 5 minutes of first layer, another layer of the same can be repeated but should not be more than 2 layers on higher phototype.
- 7 Neutralise the peel with **Neutralizing Lotion**.

Sealing (Optional)

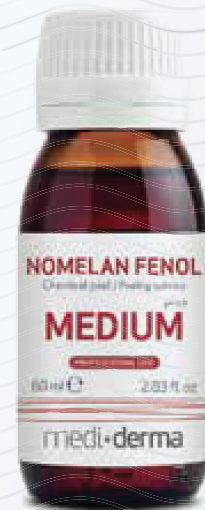
- For sealing of the treatment, please refer to Appendix.
 - The contact time of the sealer used in the above step should be 6-8 hrs.
- 8 Post contact time, the patient can clean the face only with water or soap free cleanser.

NOMELAN FENOL MEDIUM

- 1 Clean the skin with **Sensyses Classic Cleanser**.
- 2 Degrease the skin with **Degreasing solution**.
- 3 Protect sensitive areas with **Silkses Moisturising Skin Protector** (lips and nostrils).
- 4 Measure 2-3 ml of **NMF Medium** and pour it in a glass bowl. Apply the peel as a layer on the complete face.
- 5 A mild erythema and frosting (either or both) is the end point (Refer Appendix).
- 6 After 5 minutes of first layer, another layer of the same can be repeated but should not be more than 2 layers or 4ml on higher phototype.
- 7 Neutralise the peel with **Neutralizing Lotion**.

Sealing (Optional)

- For sealing of the treatment, please refer to Appendix.
 - The contact time of the sealer used in the above step should be 8 hrs.
- 8 Post contact time, the patient can clean the face only with water or soap free cleanser.



60 ml

NOMELAN FENOL KH



60 ml

- 1 Clean the skin with **Sensyses Classic Cleanser**.
- 2 Degrease the skin with **Degreasing Solution**.
- 3 Protect sensitive areas with **Silkses Moisturising Skin Protector** (lips and nostrils).
- 4 Measure 1-2 ml of **NMF KH** and pour it in a glass bowl. Apply the peel as a layer on the complete face.
- 5 A mild erythema and frosting (either or both) is the end point (Refer Appendix).
- 6 After 4 minutes of first layer, another layer of the same can be repeated depending upon the patient response but should not be more than 2 layers or 2 ml on higher phototype.
- 7 Neutralise the peel with **Neutralizing Lotion**.

Sealing (Optional)

- For sealing of the treatment, please refer to Appendix.
 - The contact time of the sealer used in the above step should be 6-8 hrs.
- 8 Post contact time, the patient can clean the face only with water or soap free cleanser.

NOMELAN FENOL FD

- 1 Clean the skin with **Sensyses Classic Cleanser**.
- 2 Degrease the skin with **Degreasing solution**.
- 3 Protect sensitive areas with **Silkses Moisturising Skin Protector** (lips and nostrils).
- 4 Measure 1 ml of **NMF FD** and pour it in a glass bowl. Apply the peel as a layer on the complete face.
- 5 A mild erythema and frosting (either or both) is the end point (Refer Appendix).
- 6 After 2-3 minutes of first layer, another layer of the same can be repeated depending upon the patient response but should not be more than 2 layers or 2 ml on Indian Skin.
- 7 Neutralise the peel with **Neutralizing Lotion**.

Sealing (Optional)

- For sealing of the treatment, please refer to Appendix.
 - The contact time of the sealer used in the above step should be 6-8 hrs.
- 8 Post contact time, the patient can clean the face only with water or soap free cleanser.



60 ml

RETISES CT YELLOW PEEL



6 x 2 ml/10 x 1ml - Ampoules
6 x 5 ml/10 x 3ml - Sachets

- 1 Clean the skin with Sensyses Classic Cleanser.
- 2 Degrease the skin with Degreasing Solution.
- 3 Protect sensitive areas with Silkses Moisturising Skin Protector (lips and nostrils).
- 4 Take 1 Retises CT ampoule, open it by breaking the neck and apply the content of the ampoule on the face with gentle massage. Give it minute to absorb, wipe out the excess with a facial tissue.
- 5 Tear the Retises CT sachet and apply the cream on the face, facilitate the absorption by massage. Wipe out the excess of cream with a facial tissue.
- 6 The contact time of the cream used in the above step should be 8 hrs.
- 7 Post contact time, the patient can clean the face only with water or soap free cleanser.

TCA 25%/35%/50%

- 1 Clean the skin with Sensyses Classic Cleanser.
- 2 Degrease the skin with Degreasing solution.
- 3 Protect sensitive areas with Silkses Moisturising Skin Protector (lips and nostrils).
- 4 Measure 1-2 ml of TCA 25%/35% and pour it in a glass bowl.
- 5 Apply a uniform layer on the face.
- 6 Keep the peel on the face for 2-4 minutes. Fanning can be done to quickly dry the peel. Frosting may appear on the face which the end point of the peel.



60ml



60ml



60ml

GLYCOLIC ACID 25% / 50% / 70%

- 1 Clean the skin with **Sensyses Classic Cleanser**.
- 2 Degrease the skin with **Degreasing Solution**.
- 3 Protect sensitive areas with **Silkses Moisturising Skin Protector** (lips and nostrils).
- 4 Measure 2-3 ml of **Glycolic Acid 25%/50%/70%** and pour it in a glass bowl.
- 5 Apply a uniform layer on the face.
- 6 Keep the peel on the face for 2-3 minutes. Fanning can be done to quickly dry the peel. Slight erythema may appear on the face which is the end point of the peel.
- 7 Another coat of **Glycolic Acid 25%/50%/70%** can be applied on the face depending upon patient compliance.
- 8 Neutralise the peel with **Neutralizing Lotion**.

Sealing (Optional)

- For sealing of the treatment, please refer to Appendix.
 - The contact time of the sealer used in the above step should be 6-8 hrs.
- 9 Post contact time, the patient can clean the face only with water or soap free cleanser.



60 ml

60 ml

60 ml

C-PEEL DELIVERY SERUM



125 ml

- 1 Clean the skin with **Sensyses Classic Cleanser**.
- 2 Degrease the skin with **Degreasing Solution**.
- 3 Protect sensitive areas with **Silkses Moisturising Skin Protector** (lips and nostrils).
- 4 Take 3 ml of **C-peel Delivery serum** and 1/4th of (approx. 0.75 g) of **glowing powder** or **Natuvalia Bleaching K Powder** and pour the both in a glass bowl (the gel and additive has to be taken in a ratio of 4:1 and the additive powder needs to be selected based upon the result desired).
- 5 Mix with spatula until a uniform mixture is formed.
- 6 Apply uniformly the above mixture as a layer on the face with gentle circular motion. A gentle massage can be performed.
- 7 Keep the mixture on the face for 10-12 minutes. In case of non-facial skin, it can be kept for 15-20 mins.
- 8 After the contact time, remove the peel with water.
- 9 Seal the treatment with **C-Vit Intensive serum**. Massage the C-Vit Intensive serum in the skin for 2-3 mins (Refer Appendix).

ARGIPEEL + MANDELAC T

- 1 Clean the skin with **Sensyses Classic Cleanser**.
- 2 Degrease the skin with **Degreasing Solution**.
- 3 Protect sensitive areas with **Silkses Moisturising Skin Protector** (lips and nostrils).
- 4 Take 2 ml of **Argipeel** in a glass bowl and apply uniform layer on the face in circular motion with gentle massage.
- 5 Keep the peel on the face for 4-5 min.
- 6 Remove the peel with water.
- 7 Then apply **Mandelac T** only on the peri-orbital area and leave for 2-3 min.
- 8 Clean with water followed by Neutralizing whole face with **Neutralizing lotion**
- 9 Seal the treatment by applying a thin layer of **Retises Nanopeel 1% Gel** and leave to stand for minimum 8 hours.
- 10 Post contact time, the patient can clean the face only with water or soap free cleanser.



100 ml



60 ml

TCA MADRID

- 1 Mix the contents of vial 1 (TCA Solution) with vial 2 (Booster Solution) in a container.
- 2 Apply the mixture in layers with a brush or a gauze, starting with the tougher areas and moving towards the more sensitive ones; forehead / cheeks / jaw line / upper lip / nose.
- 3 Allow to act for 2-3 minutes between layers until the solution is dry.
- 4 Endpoint

SOFT: gentle erythema	5x2.5ml
MEDIUM: erythema with isolated patches of frosting	5x2.5ml
FORTE: skin frosting with erythema at the base	5x2.5ml



FERULAC VALENCIA PEEL

- 1 Clean the skin with Sensyses Classic Cleanser.
- 2 Degrease the skin with Degreasing Solution.
- 3 Protect sensitive areas with Silksees Moisturising Skin Protector (lips and nostrils).
- 4 Measure 1-2 ml of Valencia Peel and pour it in a glass bowl. Apply the peel as a layer on the complete face.
- 5 A mild erythema and frosting (either or both) is the end point (Refer Appendix).
- 6 After 4 minutes of first layer, another layer of the same can be repeated depending upon the patient response but should not be more than 2 layers or 2 ml on higher phototype.
- 7 Neutralise the peel with Neutralizing Lotion.



50ml

MELASPEEL TRX

- 1 Clean the skin with Sensyses Classic Cleanser.
- 2 Degrease the skin with Degreasing Solution.
- 3 Protect sensitive areas with Silksees Moisturising Skin Protector (lips and nostrils).
- 4 Measure 1-2 ml of Melaspeel TRX and pour it in a glass bowl. Apply the peel as a layer on the complete face.
- 5 A mild erythema and frosting (either or both) is the end point (Refer Appendix).
- 6 After 4 minutes of first layer, another layer of the same can be repeated depending upon the patient response but should not be more than 2 layers or 2 ml on higher phototype.
- 7 Neutralise the peel with Neutralizing Lotion.



60ml

MELASES TRX BOOSTER PEEL

- 1 Clean the skin with Sensyses Classic Cleanser.
- 2 Degrease the skin with Degreasing Solution.
- 3 Protect sensitive areas with Silksees Moisturising Skin Protector (lips and nostrils).
- 4 Measure 1-2 ml of Melases TRX Booster peel and pour it in a glass bowl. Apply the peel as a layer on the complete face.
- 5 A mild erythema and frosting (either or both) is the end point (Refer Appendix).
- 6 After 4 minutes of first layer, another layer of the same can be repeated depending upon the patient response but should not be more than 2 layers or 2 ml on higher phototype.
- 7 Neutralise the peel with Neutralizing Lotion.



50ml



medi+derma
protocols

Professional Chemical Peels Protocols

APPENDIX 1

Indication	Protocol
Moderate Inflammatory Acne	Apply a layer of Salipeel alcoholic solution quickly and evenly from the more resistant areas to the more sensitive areas. Apply a layer of Melaspeel K and allow to dry. Apply 1-2 layers of Melaspeel J and allow to dry between applications. Apply several layers of Melaspeel J2 focally on the lesion and allow to dry between applications. In the case of high phototypes, do not apply more than 2 layers as there may be risk of inflammation. Seal treatment applying ½ sachet of Retises CT Yellow peel and allow to act for about 8 hours. After this period, wash with a mild cleansing gel (Hidraven soapless foamy cream).
Acne Scars	Mix the following products: 1/4 cup of Glowing Additive + 1/2 cup of C-Peel delivery serum + 1/2 cup of Pyruvic Peel P, place in bowl. Mix components thoroughly with a spatula and apply 2-3 layers of the solution with a gentle massage between applications to increase penetration of active ingredients. Wash the treated area with water and dry. Seal treatment with ½ sachet of Retises CT Yellow peel and allow to act 8 hours. After this period, wash with mild cleansing gel (Hidraven soapless foamy cream).
Comedonal Acne and Oily Skin	Apply 1-2 layers of Salipeel alcoholic solution quickly and evenly from more resistant areas to more sensitive skin areas. Allow product to dry between applications. With a comedone remover extract sebum from obstructed follicles and rapidly wash treated area. Apply a Salicylic Acid Propimask mask, adjust to face. Allow to act 20-30 minutes and remove. Finish treatment by applying a thin layer of Azelac hydrating gel.
Moderate Acne - Sensitive Skin	Apply 1-2 layers of Azelac M quickly and evenly from the 3 more resistant areas to the more sensitive ones. Allow product to dry between applications. Apply a fine layer of Azelac peel exfoliating gel. Do not remove. Seal treatment with Retises Nano Peel 1% gel and allow to act for 8-10 hours. After that period, wash with water and neutral soap (Hidraven Foamy Soap-Free Cream).
Aging and Cell Damage. Light	Apply 2 coats of Ferulac peel classic massaging between applications until a slight white mask appears. Combine the following products and mix well until a homogeneous mixture is obtained: 1/4 cup of Glowing Additive + 1 cup of C-Peel Delivery serum. Apply 2-3 coats of the mixture obtained by means of a gentle massage between applications to stimulate active ingredient penetration. Allow to act for 4-8 minutes. Wash area with abundant water and dry without rubbing. Apply an ampoule of Natuvalia luminous effect.
Aging and Cell Damage. Medium	Apply 2 coats of Ferulac peel classic massaging between applications until a slight white mask appears. Apply 2 coats of Ferulac peel plus massaging between applications. Apply 1-2 coats of Ferulac nano additive mist. Seal the treatment with Retises nano peel 1% gel and allow to act for 8 hours. After contact time wash with water and neutral soap (Hidraven soapless cream foam).
Anticuperosis	Apply 1-2 layers of Azelac M quickly and evenly from the 3 more resistant areas to the most sensitive areas. Allow solution to dry between applications. Apply a fine layer of exfoliating Azelac peel gel. Do not remove. Seal the treatment with Azelac Hydrating Gel applied by gentle massage.
Antiwrinkles. Slight to Moderate Wrinkles	Apply 1 layer of Spa Peel classic quickly and evenly and allow to dry. Combine the following products and mix all components thoroughly until a homogeneous mass is obtained: 1/4 cup of Resveraderm Powder Additive + 1/2 cup of Sessglicopeel classic. Begin mix application from more resistant areas to more sensitive areas (forehead, cheeks, chin, upper lip and nose). Allow to act 4-8 minutes. Neutralise peeling by washing the area of application with water and dry without rubbing. Apply 1 ampoule of Retises CT yellow peel with a gentle massage to increase penetration. Wait a few minutes and apply 1 sachet of Retises CT yellow peel. Do not remove, allow to act 8-10 hours. After this period, wash with water and neutral soap (Hidraven soapless foamy cream).
Antiwrinkles. Slight to Moderate Wrinkles. Reactive Skins	Apply 2 layers of Azelac M. Apply from the most resistant areas towards the most sensitive areas (forehead, cheeks, chin, upper lip, and nose). Allow product to dry between applications. Apply 2-4 layers of Azelac RU. Allow product to dry between applications. Apply a thin layer of exfoliating Azelac Peel gel. Do not remove. Seal treatment with layer of Retises Nano peel 1% gel and allow to act 8-10 hours. After that period, wash with water and neutral soap (Hidraven Cream solution). Product must remain in contact with the skin for 8-10 hours. After this period, the patient must wash area with mild soap (Hidraven Foamy Soap-Free Cream).

*The information is suggestive in nature. The decision of using a peel in a patient is the sole responsibility of the practitioner.

Professional Chemical Peels Protocols

APPENDIX 1

Antiwrinkles. Moderate to Severe Wrinkles	Apply 2-3 layers of Nomelan Fenol Medium with fingertips, quickly and evenly (maximum 4 ml). Begin application from more resistant areas to more sensitive areas. Extend application up to ear lobes and hairline. Wait 2-3 minutes between applications until complete absorption. Focally apply Nomelan Fenol Forte (1 ml) with fingertips (bar codes, beauty spots, scars, etc.). Allow to dry. Seal treatment with layer of Retises Forte covering whole face. Product must remain in contact with the skin for 8-10 hours. After this period, the patient must wash area with mild soap (Hidraven soapless foamy cream). Give patient a post-treatment kit for skin care during the first week. Give patient appointment 5-6 days after treatment to apply a Propimask Healing face mask.
Dark Circles and Bags under the Eyes	Combine the following products: 1/4 cup of Glowing Additive + 1/2 cup of Argipeel. Mix components well using a spatula. Apply the mixture obtained from the 5 most resistant areas towards the most sensitive areas (forehead, cheeks, upper lip and nose) including upper and lower eyelids. Allow product to act for 10 minutes. After 10 minutes, neutralise peeling by washing the area with water, dry without rubbing. Apply Mandelac T focally on lower eyelid, without rubbing, using an applicator. Final point: a light white mask appears after 4-5 minutes. Neutralise peeling by washing the area with water and dry without rubbing. Seal treatment with Retises CT Yellow peel. Do not wash off, product must remain in contact with the skin 6-8 hours.
Depigmentation. Moderate blotches	Apply 2 coats of Azelac M. Start by the more resistant areas and move to the more sensitive areas: forehead, cheeks, chin, upper lip and nose. Allow to dry between applications. Apply 2 coats of Azelac RU. Allow to dry between applications. Apply 2-3 additional coats of Azelac RU focally on the lesion. Apply a fine coat of Azelac peel exfoliating gel. Do not remove. Seal the treatment with a coat of Retises Nanopeel 1% gel and allow to act 8-10 hours. After that time, wash with water and neutral soap (Hidraven soapless foamy cream).
Depigmentation. Severe blotches	Apply 1-3 coats of Nomelan Fenol KH (in high phototypes apply Nomelan Fenol FD) with a gauze soaked in the solution. Apply rapidly and uniformly, without rubbing. Begin application from most reactive areas and continue in less reactive areas. Extend application to ear lobes and to 2 mm beyond hairline on forehead. Allow to dry between applications. In low phototypes apply Nomelan Fenol Forte focally on the lesion. Seal treatment by applying a fine coat of Retises Forte and allow to act for 8-10 hours. Give the patient a post-treatment kit.
Anti-Stretch Mark	Apply Spa peel classic quickly and evenly, allow to dry. Apply Pyruvic peel plus focally on wrinkles 1-3 times. Allow solution to dry between each application. Apply C-vit mist on area to treat and massage gently until completely absorbed. Finish treatment by applying a fine layer of Retises Forte and allow to act 8-10 hours. After this period, wash with abundant water (DO NOT USE IF PREGNANT).
Moisturizing	Apply Pyruvic peel LA and allow to dry. Combine the following products: 1/4 cup of Resveraderm Additive + 1/2 cup of Lactipeel. Mix components well using a spatula. Massage into skin until completely absorbed. Apply the mixture obtained from the most resistant areas towards the most sensitive areas (forehead, cheeks, chin, upper lip, and nose). Allow product to act for 3-5 minutes. Neutralise peeling by washing the area with water and dry without rubbing. Apply an ampoule of Hylanses, massaging gently until completely absorbed. Finish treatment by applying Nanomask hyaluronic acid mask, allow to act 15-30 minutes and remove.
Revitalizing. Dull skins without cellular damage	Apply a layer of Salipeel DS and let it dry. Make the following combination of products: 1/4 cup of Glowing additive, 1/2 cup of Argipeel (7.5 ml). Mix all the ingredients together with a spatula and apply it from the most resistant areas to the most sensitive ones (forehead, cheeks, chin, upper lip, nostrils) let it act for 10-15 minutes. Neutralize the chemical peel by washing the application area with water. Apply an ampoule of Natuvalia glowing effect with a soft massage until its complete absorption.
Revitalizing. Photodamaged skin	Apply 2 layers of Ferulac peel classic with a gentle massage until a white mask appears. Make the following combination of products: 1/4 cup of Glowing additive + 3/4 cup of C-peel delivery serum (10 ml). Mix all the ingredients together with a spatula and apply by layers with a gentle massage between them to enhance the penetration of active ingredients. Wash the area with water and dry without rubbing. Apply an ampoule of Natuvalia glowing effect with a soft massage until its complete absorption.

*The information is suggestive in nature. The decision of using a peel in a patient is the sole responsibility of the practitioner.

Contact time, Endpoint & Neutralisation; Peel Specific*

APPENDIX 2

Name of peel	Nature of formulation	Contact time (minutes)	End point	Neutralising/Cleansing
Sesglicopeel Classic	Gel base	8-10	Mild erythema	Water followed by Neutralising lotion
Sesglicopeel S	Gel base	8-10	Mild erythema	Water followed by Neutralising lotion
Sesglicopeel K	Gel base	8-10	Mild erythema	Water followed by Neutralising lotion
Sesglicopeel KH	Gel base	8-10	Mild erythema	Water followed by Neutralising lotion
Melaspeel K	Hydroalcoholic Solution	4-5	Erythema	Neutralising lotion
Melaspeel KH	Hydroalcoholic Solution	4-5	Erythema	Neutralising lotion
Melaspeel J	Hydroalcoholic Solution	4-5	Erythema	Neutralising lotion
Salipeel Alcoholic Solution	Hydroalcoholic Solution	Endpoint is contact time	Pseudofrost	Neutralising lotion
Salipeel DS	Semi-gel	Endpoint is contact time	Pseudofrost	Neutralising lotion
Salipeel Plus	Hydroalcoholic Solution	Endpoint is contact time	Pseudofrost	Neutralising lotion
Mandelac Solution	Hydroalcoholic Solution	4-5	Erythema or Pseudofrost	Neutralising lotion
Mandelac C	Hydroalcoholic Solution	4-5	Erythema or Pseudofrost	Neutralising lotion
Mandelac L	Hydroalcoholic Solution	4-5	Erythema or Pseudofrost	Neutralising lotion
Mandelac T	Semi-gel	4-5	Erythema or Pseudofrost	Water followed by Neutralising lotion
Mandelac Exfoliating Gel	Gel base	5-8	Contact time is the end point	Water followed by Neutralising lotion
Azelac Gel	Gel base	4-5	Contact time is the end point	Water followed by Neutralising lotion
Azelac M	Hydroalcoholic Solution	4-6	Pseudofrost with mild erythema	Neutralising lotion
Azelac RU	Hydroalcoholic Solution	4-5	Pseudofrost with mild erythema	Neutralising lotion
Argipeel	Gel base	4-5	Contact time is the end point	Water followed by Neutralising lotion
Lactipeel	Gel base	4-5	Contact time is the end point	Water followed by Neutralising lotion
Pyruvic LA	Hydroalcoholic Solution	4-5	Erythema	Neutralising lotion
Pyruvic P	Semi-gel	4-5	Erythema	Neutralising lotion
Pyruvic Plus	Semi-gel	4-5	Erythema	Neutralising lotion
Spa Peel Classic	Hydroalcoholic Solution	4-5	Pseudofrost with mild erythema	Neutralising lotion
Spa Peel Lightening	Hydroalcoholic Solution	4-5	Pseudofrost with mild erythema	Neutralising lotion
Nomelan Fenol Light	Hydroalcoholic Solution	4-5	Mild erythema and Frosting (either or both)	Neutralising lotion
Nomelan Fenol Medium	Hydroalcoholic Solution	4-5	Mild erythema and Frosting (either or both)	Neutralising lotion
Nomelan Fenol Forte	Hydroalcoholic Solution	4-5	Mild erythema and Frosting (either or both)	Neutralising lotion
Nomelan Fenol KH	Hydroalcoholic Solution	4-5	Mild erythema and Frosting (either or both)	Neutralising lotion
Nomelan Fenol FD	Hydroalcoholic Solution	4-5	Mild erythema and Frosting (either or both)	Neutralising lotion
Retises CT Yellow Peel	Cream	4-5	Contact time is the end point	Not needed
TCA 25%	Hydroalcoholic Solution	2-4	Frosting	Neutralising lotion
TCA 35%	Hydroalcoholic Solution	2-4	Frosting	Neutralising lotion
TCA 50%	Hydroalcoholic Solution	1-2	Frosting	Neutralising lotion
Glycolic Acid 25%	Semi-gel	2-3	Mild erythema	Neutralising lotion
Glycolic Acid 50%	Semi-gel	2-3	Mild erythema	Neutralising lotion
Glycolic Acid 70%	Semi-gel	2-3	Mild erythema	Neutralising lotion
Ferulac Peel Booster system	Hydroalcoholic Solution	Step 1: pseudofrost Step 2: 4-5 min	Step 1: pseudofrost Step 2: Contact time is the end point	Neutralising lotion
TCA Madrid	Hydroalcoholic Solution	2-4	Frosting Erythema	Neutralising lotion
TCA Madrid Medium	Hydroalcoholic Solution	2-4	Frosting Erythema	Neutralising lotion
TCA Madrid Forte	Hydroalcoholic Solution	2-4	Contact time is the end point	Neutralising lotion
Ferulac Valencia peel	Hydroalcoholic Solution	4-5	Contact time is the end point	Neutralising lotion
Melases TRX Booster	Hydroalcoholic Solution	4-5	Contact time is the end point	Neutralising lotion
Melaspeel TRX	Hydroalcoholic Solution	4-5	Contact time is the end point	Neutralising lotion

*The endpoint observed in a peel procedure is patient specific. It also depends on other variable factors such as room temperature, reagents used etc.

Sealers; Usage and Contact time

APPENDIX 3

Name of Sealer	Usage	Contact Time
Retises CT Yellow Peel	Only use the sachet of Retises CT Yellow peel. Apply a thin layer of sachet and massage it to completely absorb into the skin	6-8 hrs.
Retises Nano Peel 1% Gel	Apply a thin layer of Retises Nano Peel 1% gel and massage it to completely absorb into the skin	6-8 hrs.
Retises Forte Cream	Apply a thin layer of Retises Forte Cream and massage it to completely absorb into the skin	6-8 hrs.
Acglicolic Classic Gel Cream Forte	Apply a thin layer of Acglicolic Classic Forte and massage it to completely absorb into the skin	6-8 hrs.
Salises Moisturizing gel	Apply small amount of Salises Moisturizing gel and massage it to completely absorb into the skin	6-8 hrs.
Hidraderm Hyal Facial Cream	Apply small amount of Hidraderm Hyal Facial Cream and massage it to completely absorb into the skin	6-8 hrs.
C-Vit Glowing Fluid	Apply small amount of C-Vit Glowing Fluid and massage it to completely absorb into the skin	6-8 hrs.
Natuvalia Glowing Effect ampoule	Apply half of the ampoule on the face and massage it to completely absorb into the skin	6-8 hrs.
Natuvalia Firming ampoule	Apply half of the ampoule on the face and massage it to completely absorb into the skin	6-8 hrs.
Natuvalia Broken Capillaires ampoule	Apply half of the ampoule on the face and massage it to completely absorb into the skin	6-8 hrs.
Natuvalia Bleaching Ampoule	Apply half of the ampoule on the face and massage it to completely absorb into the skin	6-8 hrs.
Hidaloe Gel	Apply small amount of Hidaloe Gel on the face and slightly massage it to completely absorb into the skin	6-8 hrs.

Peels & Choice of Sealers* **

APPENDIX 4

Name of Peel	Retises CT Yellow Peel Sachet	Retises Nano Peel 1% Gel	Retises Forte Cream	Acglicolic Classic Gel Cream Forte	Salises Moisturizing gel	Hidraderm Hyal Facial Cream	C-Vit Glowing Fluid	Natuvalia Glowing Effect ampoule	Natuvalia Firming ampoule	Natuvalia Bleaching Ampoule
Sesglicopeel Classic	✓			✓			✓	✓	✓	✓
Sesglicopeel S				✓	✓					✓
Sesglicopeel K	✓		✓	✓						✓
Sesglicopeel KH	✓		✓	✓						✓
Melaspeel K	✓		✓	✓						✓
Melaspeel KH	✓		✓	✓						✓
Melaspeel J	✓			✓						
Salipeel Alcoholic Solution		✓		✓	✓					
Salipeel DS		✓		✓	✓					
Salipeel Plus		✓		✓	✓					
Mandelac Solution	✓			✓						
Mandelac C	✓			✓			✓	✓	✓	
Mandelac L	✓			✓			✓	✓	✓	
Mandelac T	✓			✓						
Mandelac Exfoliating Gel				✓		✓	✓	✓	✓	✓
Azelac Gel	✓	✓	✓	✓						
Azelac M	✓	✓	✓	✓						
Argipeel				✓		✓	✓	✓	✓	✓
Lactipeel				✓		✓	✓	✓	✓	✓
Pyruvic LA	✓	✓	✓	✓		✓				
Pyruvic P	✓	✓	✓	✓		✓				
Pyruvic Plus	✓	✓	✓	✓		✓				
Spa Peel Classic				✓						
Spa Peel Lightening	✓		✓	✓						✓
Nomelan Fenol Light	✓		✓	✓						
Nomelan Fenol Medium	✓		✓	✓						
Nomelan Fenol KH	✓		✓	✓						
Nomelan Fenol FD	✓		✓	✓						
TCA 25%	✓		✓	✓						
TCA 35%	✓		✓	✓						
Glycolic Acid 25%	✓		✓	✓						
Glycolic Acid 50%	✓		✓	✓						
Glycolic Acid 70%	✓		✓	✓						
Ferulac Peel Booster System		✓	✓	✓			✓	✓		
TCA Madrid	✓	✓	✓	✓						
TCA Madrid Medium	✓	✓	✓	✓						
Ferulac Valencia	✓	✓	✓	✓						
Melases TRX Booster	✓	✓	✓	✓						
Melaspeel TRX	✓	✓	✓	✓						

* The use of sealer is recommended to increase the effectivity of the peeling procedure. Per procedure, one of the recommended sealer should be used.

** The choice

medi+derma
by sesderma





medi+derma
by sesderma

www.mediderma.co.in



Corporate Office: Unit # 205, 2nd Floor, Tower - D, Global Buisness Park, M.G. Road, Near Dronacharya Metro station, gurgaon - 122002